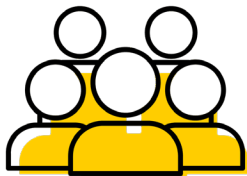




Welcome to the OB Inpatient Unit

We are honored to care for you.

Your Team



- Doctor or midwife, and pediatrician
- Nurses and nursing assistants
- Food and nutrition staff
- Hearing screen staff
- Registration staff
- Social worker
- Lactation consultants
- Research nurses
- Environmental services staff

Unit Security



- Mother, baby, and 1 support person will have matching bracelets. These are checked each time mother and baby are reunited. Do not remove them.
- Never leave baby alone in your room.
- Main unit entrance door is locked and is the only entrance for visitors.
- Only staff with baby feet on their name badge are allowed to take baby from your room.
- Always transport baby in their bassinet.

Handwashing



- Wash your hands:
 - Before touching your baby
 - After changing your baby's diaper
 - After you use the restroom
- Ask visitors to wash their hands before touching your baby

Safety



- Always place baby on their back to sleep.
- If anyone feels tired when holding the baby, they should put them back in the bassinet.
- Bring your baby's car seat into the hospital.
- No latex balloons are allowed in the hospital.

Rest



- "Quiet time" is each day from 12:30 p.m. to 2:00 p.m.

Immunizations



- For delivered patients, as needed:
 - Tdap
 - MMR
 - Varicella
- For support person, as needed:
 - Tdap
- For baby:
 - Hepatitis B