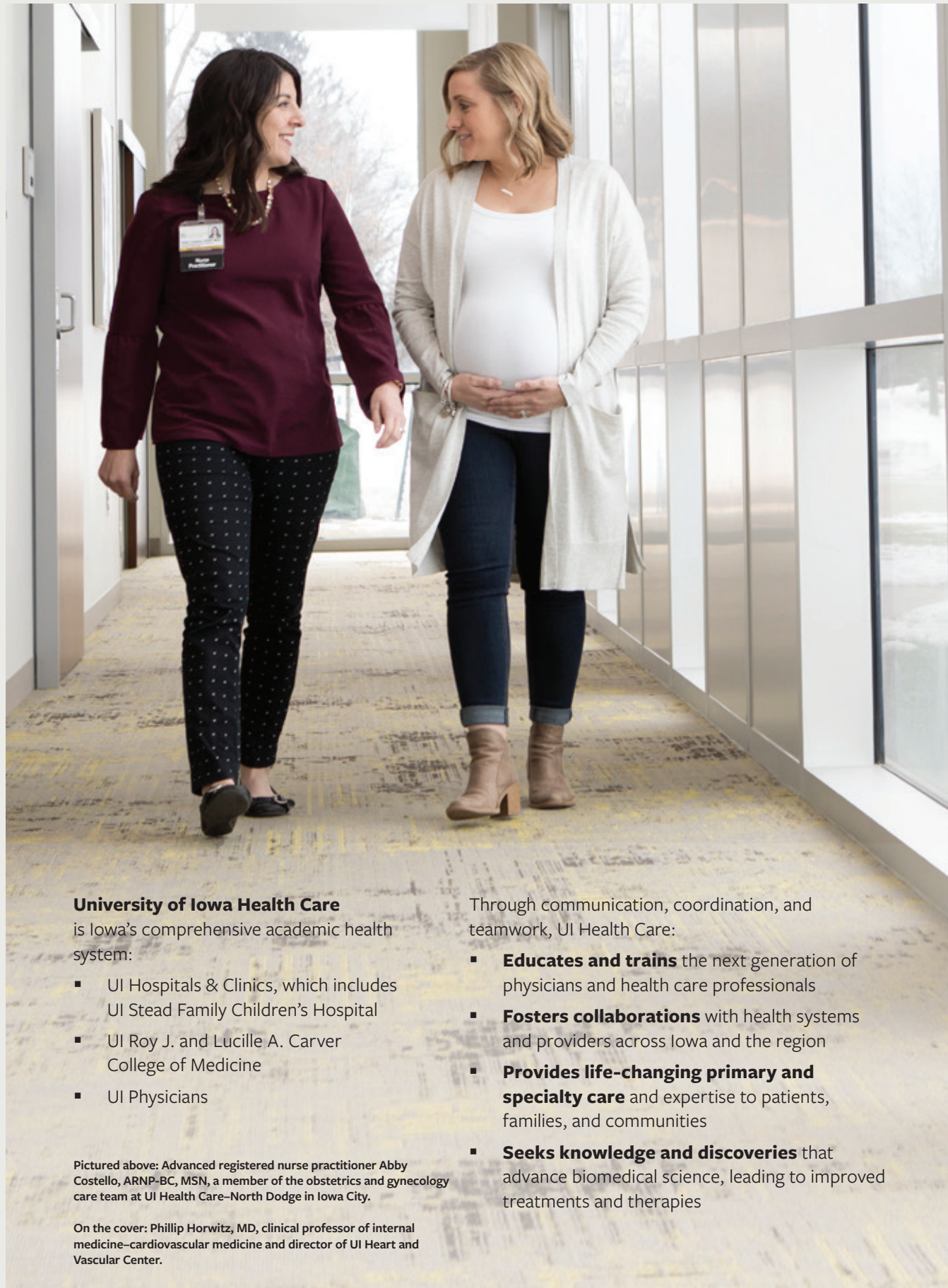




2019
ANNUAL REPORT





University of Iowa Health Care is Iowa's comprehensive academic health system:

- UI Hospitals & Clinics, which includes UI Stead Family Children's Hospital
- UI Roy J. and Lucille A. Carver College of Medicine
- UI Physicians

Pictured above: Advanced registered nurse practitioner Abby Costello, ARNP-BC, MSN, a member of the obstetrics and gynecology care team at UI Health Care—North Dodge in Iowa City.

On the cover: Phillip Horwitz, MD, clinical professor of internal medicine—cardiovascular medicine and director of UI Heart and Vascular Center.

Through communication, coordination, and teamwork, UI Health Care:

- **Educates and trains** the next generation of physicians and health care professionals
- **Fosters collaborations** with health systems and providers across Iowa and the region
- **Provides life-changing primary and specialty care** and expertise to patients, families, and communities
- **Seeks knowledge and discoveries** that advance biomedical science, leading to improved treatments and therapies

OUR MISSION:
Changing medicine. Changing lives.

OUR VISION:
To be a destination academic medical center for Iowa and the world.

OUR VALUES:
Innovation. Collaboration.
Accountability. Respect. Excellence.

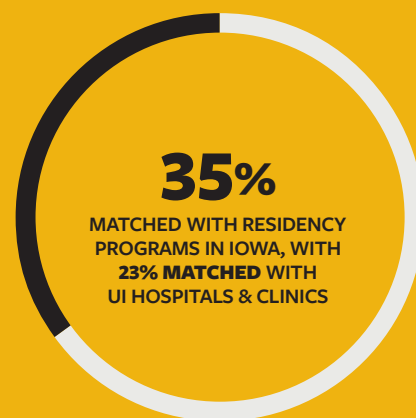
NOTABLE 2019 HIGHLIGHTS AND RECOGNITION:

- More than **1 million clinic visits** and over **36,000 inpatient admissions** at UI Hospitals & Clinics
- More than **\$232 million in external research funding** to Carver College of Medicine investigators
- A **No. 2 ranking** from *Forbes* as the “**Best Employer for Diversity**” in its Healthcare & Social category
- Six Carver College of Medicine programs ranked by *U.S. News & World Report* in its 2020 “Best Graduate Schools” listing, including a **No. 1 ranking** for **Physician Assistant Studies and Services**
- Six adult specialties and six pediatric specialties included in the 2019–20 “**Best Hospitals**” and “**Best Children’s Hospitals**” rankings by *U.S. News & World Report*
- The **40th anniversary of AirCare**, the emergency and critical care flight service that has transported more than 30,000 patients and logged over 3 million miles since 1979
- The **10th anniversary of UI Sports Medicine**, which delivers comprehensive care for competitive and recreational athletes of all ages

MEDICAL EDUCATION AND TRAINING

Changing the future of health care through innovation, integration, and individualization

152
FIRST-YEAR MD STUDENTS (2018-19 ACADEMIC YEAR)



41%
CHOSE PRIMARY CARE SPECIALTIES FOR RESIDENCY TRAINING



1,356
FACULTY MEMBERS

609
MEDICAL STUDENTS

75
PHYSICIAN ASSISTANT STUDENTS

130
PHYSICAL THERAPY STUDENTS

800+
RESIDENTS, FELLOWS, AND DENTISTS IN TRAINING

300+
GRADUATE STUDENTS



EDUCATION/TRAINING PROGRAMS NATIONALLY RANKED BY U.S. NEWS & WORLD REPORT ("BEST GRADUATE SCHOOLS 2020")

1
PHYSICIAN ASSISTANT

6
PHYSICAL THERAPY

12
FAMILY MEDICINE

22
INTERNAL MEDICINE

26
PRIMARY CARE

38
RESEARCH

One of the milestones of medical education at Iowa is Match Day, when fourth-year students learn where they will begin medical residency training after graduation. The envelope-opening event, held simultaneously at medical schools across the nation, brings anticipation, joy, and celebration for students like Atef Kotob (second from the left).



20

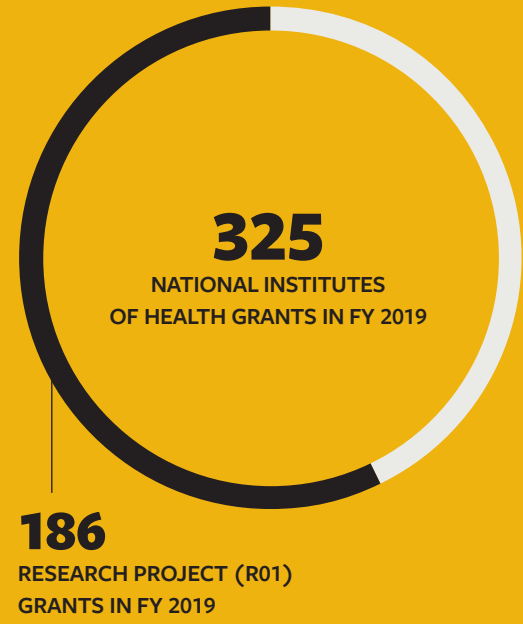
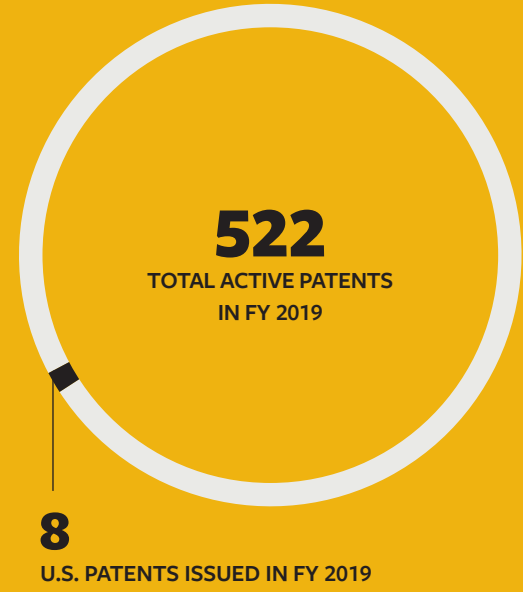
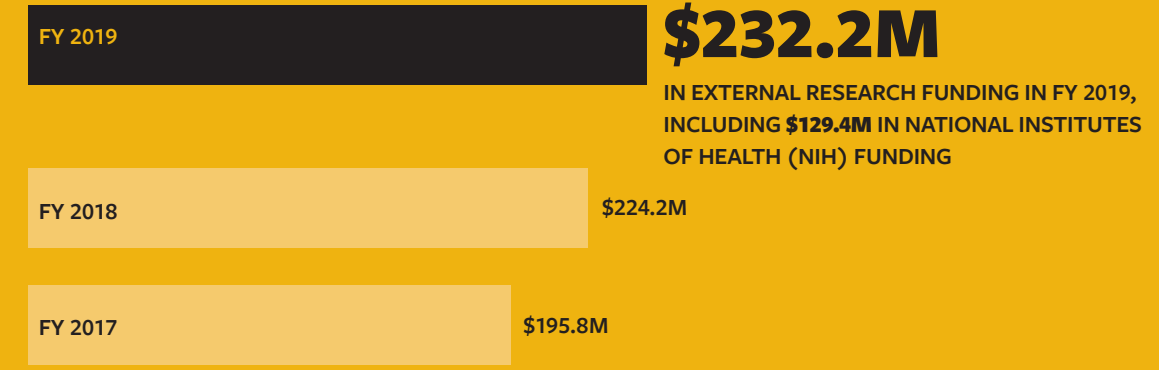
FACULTY MEMBERS NAMED TO THE INAUGURAL GROUP OF RESEARCHERS ON THE CARVER COLLEGE OF MEDICINE WALL OF SCHOLARSHIP:

- FRANCOIS M. ABBOUD, MD, MACP
- MICHAEL D. ABRAMOFF, MD, PHD
- HAROLD P. ADAMS JR., MD
- NANCY C. ANDREASEN, MD, PHD
- SUE C. BODINE, PHD
- GARRY R. BUETTNER, PHD
- KEVIN P. CAMPBELL, PHD
- DANIEL DIEKEMA, MD, MS
- MICHAEL B. EDMOND, MD
- KAIKOBAD IRANI, MD
- J. BROOKS JACKSON, MD, MBA
- C. MICHAEL KNUDSON, MD, PHD
- J. LAWRENCE MARSH, MD
- DAWN QUELLE, PHD
- D. THOMAS RUTKOWSKI, PHD
- PATRICK SCHLIEVERT, PHD
- VAL C. SHEFFIELD, MD, PHD
- EDWIN M. STONE, MD, PHD
- MICHAEL WELSH, MD
- JOSEPH ZABNER, MD

The Wall of Scholarship honors Carver College of Medicine faculty whose peer-reviewed research articles have been cited more than 1,000 times in subsequent published research articles, based on at least two of three recognized academic indices: Google Scholar, Scopus, and Web of Science.

RESEARCH AND DISCOVERY

Changing medicine through multidisciplinary biomedical science, leading to new knowledge, new collaborations, and new treatments



43
NATIONAL RANKING IN NIH FUNDING

21
NATIONAL RANKING IN NIH FUNDING AMONG PUBLIC MEDICAL SCHOOLS

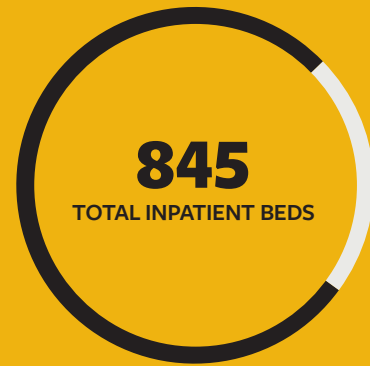
14
MEMBERS OF THE NATIONAL ACADEMY OF MEDICINE

2
MEMBERS OF THE NATIONAL ACADEMY OF SCIENCES

2
HOWARD HUGHES MEDICAL INSTITUTE INVESTIGATORS

PATIENT CARE AND SERVICE

Changing lives through comprehensive, compassionate care for patients and families



655
ADULT INPATIENT BEDS AT UI HOSPITALS & CLINICS

190
PEDIATRIC BEDS AT UI STEAD FAMILY CHILDREN'S HOSPITAL

1,082,647
CLINIC VISITS

55,956
EMERGENCY DEPARTMENT VISITS

36,068
ACUTE ADMISSIONS

1,129
PATIENTS TRANSPORTED BY AIR AND MOBILE CRITICAL CARE SERVICES



34,736
MAJOR SURGICAL OPERATIONS



154,669
MINOR SURGICAL PROCEDURES



570
ORGAN AND TISSUE TRANSPLANTS



2,433
BIRTHS



1,010
STAFF PHYSICIANS AND DENTISTS

2,477
NURSES

10,379
TOTAL HOSPITAL STAFF MEMBERS

1,515
VOLUNTEERS

123,912
VOLUNTEER PROGRAM HOURS



ADULT AND PEDIATRIC CARE SPECIALTIES NATIONALLY RANKED BY U.S. NEWS & WORLD REPORT FOR 2019-20

3 EAR, NOSE, AND THROAT	6 OPHTHALMOLOGY	16 PEDIATRIC NEONATOLOGY
19 GYNECOLOGY	21 PEDIATRIC ENDOCRINOLOGY	26 PEDIATRIC UROLOGY
27 PULMONOLOGY	27 ORTHOPEDICS	29 PEDIATRIC ORTHOPEDICS
39 PEDIATRIC NEPHROLOGY	43 CANCER	46 PEDIATRIC CANCER

Sara Nolan, PA-C, is a physician assistant with the Inpatient Diabetes Management Service at UI Hospitals & Clinics. She is one of more than 15,000 faculty, staff, students, and volunteers who come together every day to serve patients and families at UI Hospitals & Clinics, outpatient and walk-in locations in the Iowa City area, and primary and specialty care clinics in communities across Iowa.



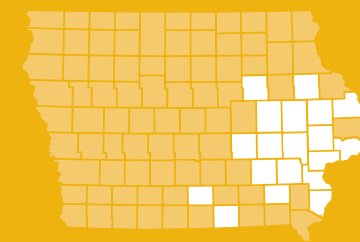
17K

MORE THAN 17,500 STUDENTS FROM 173 SCHOOLS IN 76 IOWA COUNTIES PARTICIPATING IN UI HEALTH CARE STEM (SCIENCE, TECHNOLOGY, ENGINEERING, AND MATH) PROGRAMS IN FY 2019.

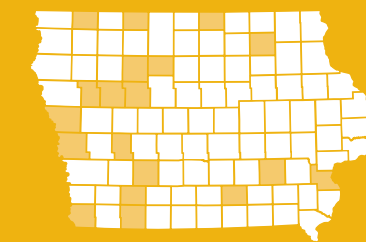
Developed for students in kindergarten through 12th grade, UI Health Care STEM Education programs spark interest and excitement—leading to better understanding of health and fostering the next generation of health care professionals.

OUTREACH AND ENGAGEMENT

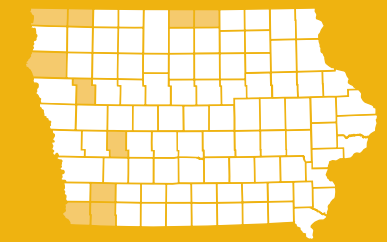
Changing lives through service to Iowans and their communities



831
PEOPLE FROM 19 IOWA COUNTIES (IN WHITE) PARTICIPATED IN ADULT-BASED COMMUNITY EDUCATION PROGRAMS



80
IOWA COUNTIES (IN WHITE) INCLUDE PRACTICE LOCATIONS FOR UI MEDICAL ALUMNI



5,016
HEALTH CARE PROVIDERS FROM 89 IOWA COUNTIES (IN WHITE) PARTICIPATED IN CONTINUING MEDICAL EDUCATION PROGRAMS



878,000+
PEOPLE SERVED THROUGH COMMUNITY BENEFIT PROGRAMS AND SERVICES REPORTED TO THE IOWA HOSPITAL ASSOCIATION IN FY 2018 (MOST CURRENT INFO AVAILABLE)

\$334M+
IN COMMUNITY BENEFITS OF STAFF TIME AND SERVICES



TELEMEDICINE SITES ACROSS IOWA

- 18** UI LOCATIONS
- 13** CHILD HEALTH SPECIALTY CLINIC LOCATIONS
- 5** UI OUTREACH CLINIC LOCATIONS
- 26** NON-UI LOCATIONS
- 10** STATE FACILITIES



80
ADULT AND PEDIATRIC SPECIALTY CARE CLINICS IN 20 COMMUNITIES ACROSS IOWA

13
IOWA COMMUNITIES WITH CHILD HEALTH SPECIALTY CLINICS

27
CLINIC LOCATIONS IN 21 IOWA COMMUNITIES

6
REGIONAL MEDICAL EDUCATION CENTERS ACROSS IOWA

PHILANTHROPY

Changing medicine through generous commitments to our people and our programs



SOURCE OF GIFTS

■ ALUMNUS (ALL AREAS)	\$24,005,956
■ CORPORATIONS	\$9,974,079
■ FOUNDATIONS	\$20,996,334
■ NON-ALUMNUS	\$21,184,836
■ ORGANIZATIONS	\$15,170,213

31,740

GIFTS TO UI HEALTH CARE



♥ = 1,000

28,532

CONTRIBUTORS TO UI HEALTH CARE



👤 = 1,000



25
YEARS OF SUPPORT
TO UI STEAD FAMILY
CHILDREN'S HOSPITAL
FROM UI DANCE MARATHON

For members of University of Iowa Dance Marathon, the university's largest student organization, 2019 was a banner year. Students spent 24 hours without sleep or caffeine to raise \$2.96 million for pediatric cancer research and programs that benefit patients and families. Over its 25-year history, UI Dance Marathon has generated over \$27.5 million in support.

CONSOLIDATED FINANCIAL INFORMATION

Fiscal year 2019 enterprise revenue and expenses



FISCAL YEAR 2019 REVENUE

■ PATIENT CARE	\$2,130,199,032	82.8%
■ EXTRAMURAL FUNDING	\$239,668,884	9.3%
■ OTHER OPERATING REVENUE	\$127,103,813	4.9%
■ GENERAL EDUCATION FUNDS	\$73,299,762	2.9%
□ STATE APPROPRIATIONS	\$2,378,746	0.1%
TOTAL	\$2,572,650,237	100.0%



FISCAL YEAR 2019 EXPENSES

■ PERSONNEL	\$1,390,729,146	57.1%
■ SUPPLIES	\$541,884,844	22.3%
■ LICENSES, FEES & OTHER		
OPERATING EXPENSES	\$144,212,411	5.9%
■ DEPR AND AMORTIZATION	\$110,876,735	4.6%
□ REPAIRS & MAINTENANCE	\$107,811,907	4.4%
■ SERVICES (INSURANCE)	\$20,585,067	0.8%
■ OCCUPANCY, BILLING & OVERHEAD (ADMIN & MEDICAL)	\$119,284,567	4.9%
TOTAL	\$2,435,384,677	100.0%



FISCAL YEAR 2019 PERSONNEL EXPENSES

■ FACULTY	\$391,059,312	28.1%
■ SEIU	\$348,195,175	25.0%
■ P&S	\$348,279,494	25.0%
■ MERIT	\$191,403,477	13.8%
□ RESIDENTS, FELLOWS AND POST DOC	\$75,108,388	5.4%
■ OTHER TOTAL	\$36,683,300	2.7%
TOTAL	\$1,390,729,146	100.0%

UNIVERSITY OF IOWA HEALTH CARE 2019 ANNUAL REPORT

Produced by University of Iowa Health Care Marketing and Communications. All rights reserved. No part of this publication may be reproduced or transmitted in any way without written permission:

Marketing and Communications
University of Iowa Health Care
200 Hawkins Drive, W319 GH
Iowa City, Iowa 52242

EDITOR
David Pedersen

DESIGN
Ryan Potter, Robyn Hepker/Benson & Hepker Design

PHOTOGRAPHY
Susan McClellan, Justin Torner, Jesse Wallace

CONTACT US
Please send all comments or questions to the address above or call 319-356-1009.

The University of Iowa prohibits discrimination in employment, educational programs, and activities on the basis of race, creed, color, religion, national origin, age, sex, pregnancy, disability, genetic information, status as a U.S. veteran, service in the U.S. military, sexual orientation, gender identity, associational preferences, or any other classification that deprives the person of consideration as an individual. The university also affirms its commitment to providing equal opportunities and equal access to university facilities. For additional information on nondiscrimination policies, contact the Director, Office of Equal Opportunity and Diversity, the University of Iowa, 202 Jessup Hall, Iowa City, Iowa 52242-1316, 319-335-0705 (voice), 319-335-0697 (TTD), diversity@uiowa.edu.



Marketing and Communications
University of Iowa Health Care
200 Hawkins Drive, W319 GH
Iowa City, Iowa 52242

**CHANGING MEDICINE.
CHANGING LIVES.®**