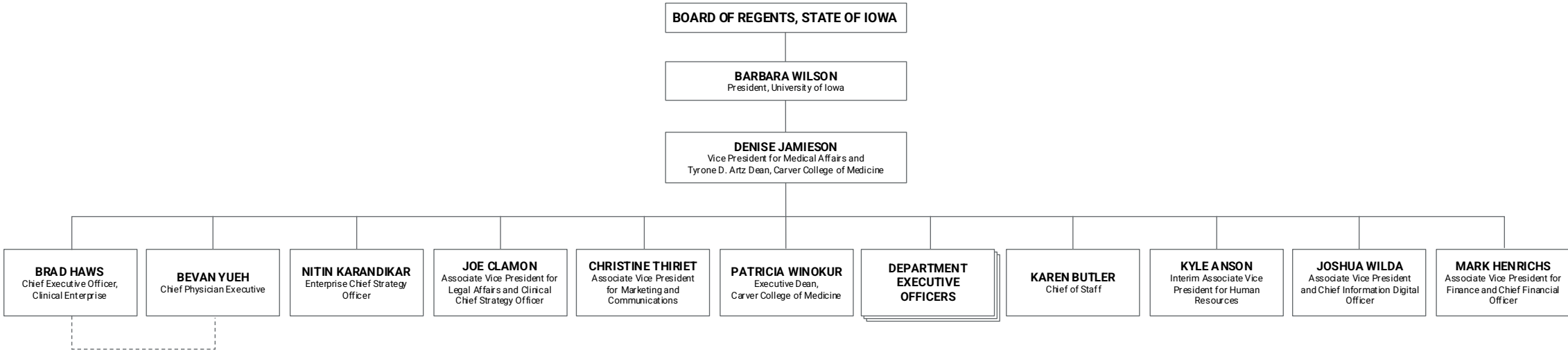


UI Health Care Leadership



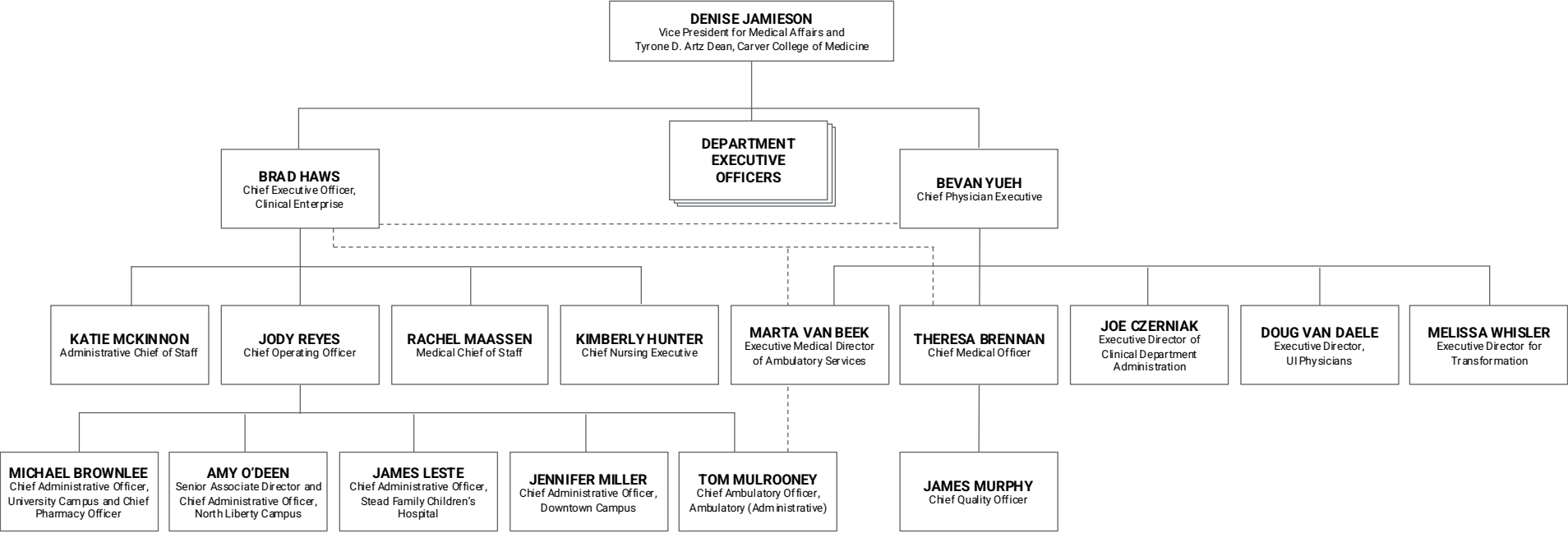
CORPORATE SERVICES

- Capital Management and Facilities Planning (Boothby)
- Compliance and Privacy (Bachrach)
- Finance (Henrichs)
- Health Care Information Services (Wilda)
- Human Resources (Anson)
- Legal (Clamon)
- Marketing and Communications (Thiriet)
- Strategy (Karandikar / Clamon)

Please note: This chart is intended to provide an overview of the organization's structure. Not all reporting relationships and positions are shown. Please reference additional charts for greater organizational depth/detail.



UI Health Care Clinical Enterprise



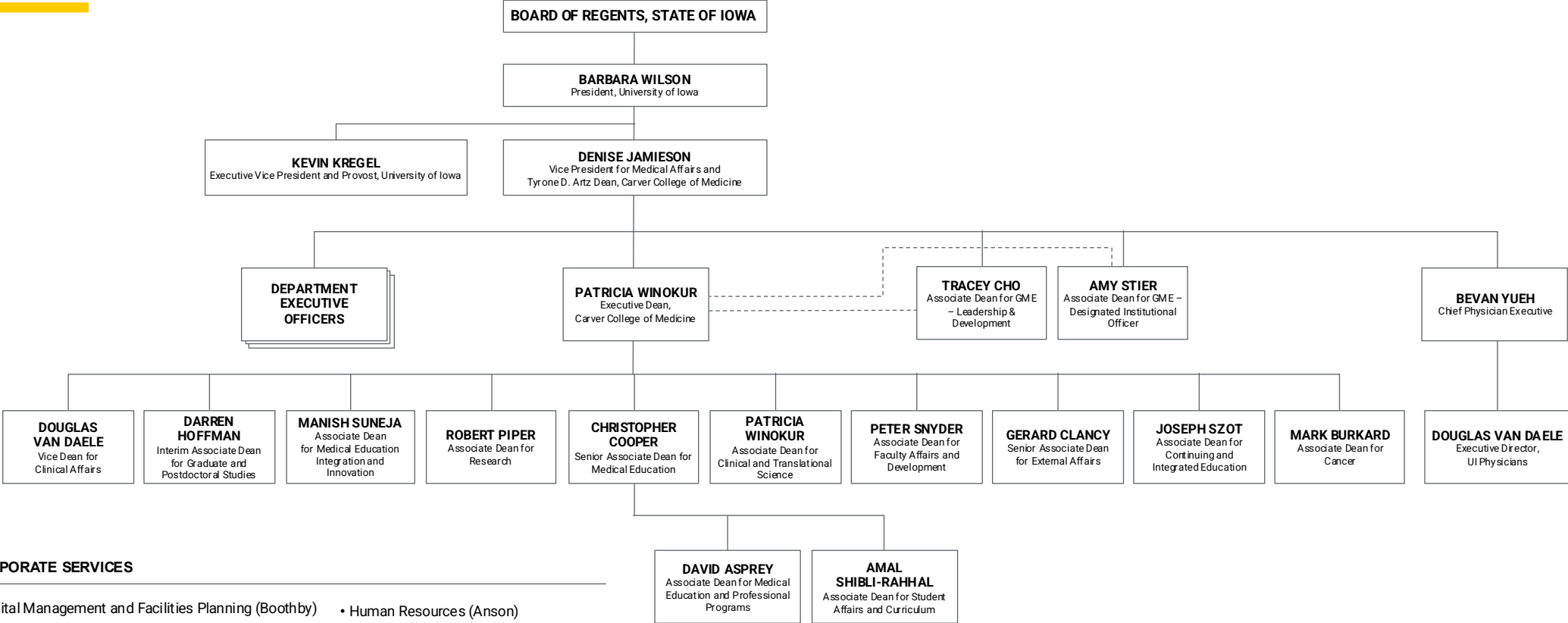
CORPORATE SERVICES

- Capital Management and Facilities Planning (Boothby)
- Compliance and Privacy (Bachrach)
- Finance (Henrichs / Allen)
- Health Care Information Services (Wilda)
- Human Resources (Anson)
- Legal (Clamon)
- Marketing and Communications (Thiriet)
- Strategy (Karandikar / Clamon)

Please note: This chart is intended to provide an overview of the organization's structure. Not all reporting relationships and positions are shown. Please reference additional charts for greater organizational depth/detail.

UI Health Care Academic Enterprise

Carver College of Medicine



CORPORATE SERVICES

- Capital Management and Facilities Planning (Boothby)
- Compliance and Privacy (Bachrach)
- Finance (Henrichs / Haddy)
- Health Care Information Services (Wilda)
- Human Resources (Anson)
- Legal (Clamon)
- Marketing and Communications (Thiriet)
- Strategy (Karandikar)

Please note: This chart is intended to provide an overview of the organization's structure. Not all reporting relationships and positions are shown. Please reference additional charts for greater organizational depth/detail.

