



# WANT TO HELP SAVE A LIFE? WE THOUGHT SO.

## EVERY THREE MINUTES **SOMEONE IS DIAGNOSED WITH BLOOD CANCER**

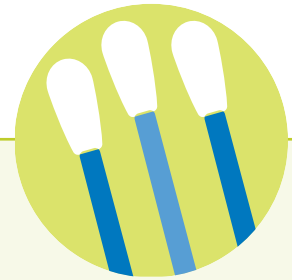
Thousands of patients with blood cancers like leukemia or other diseases like sickle cell anemia, need a marrow transplant to survive. Most patients don't have a fully matched donor in their family — and that's when they turn to Be The Match<sup>®</sup>.

By joining the Be The Match Registry<sup>®</sup>, your tissue type will be included in the search process for every patient in need.

**We need registry members who are committed to helping save a life.** That means being willing to donate to ANY patient in need, and being ready to follow through if called.

If you are called as a potential match for a patient in need, this commitment also means that you're willing to take up to 20 – 30 hours spread over 4 – 6 weeks to:

- Attend an information session
- Attend appointments
- Donate



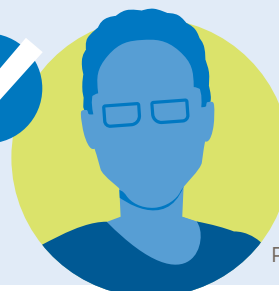
## READY TO **JOIN?**

- Confirm you're between the ages of 18 - 44
- Commit to donating to any patient in need
- Review the health guidelines and confirm you do not have any health issues listed

**Join in-person at a donor registry drive or online at [Join.BeTheMatch.org/UIHC](http://Join.BeTheMatch.org/UIHC)**

**If you aren't ready to join at this time, that's okay.** There are many other ways you can help save a life — just ask us how or visit: [BeTheMatch.org/getinvolved](http://BeTheMatch.org/getinvolved)

Donor



Patient

**70%**

of patients needing a marrow transplant **do not have a fully matched donor in their family.**

**14,000**

patients per year whose only hope for a cure is a **transplant from someone outside their family.**

## KEEP IN MIND

- **You are not donating for a patient today.** The cheek swab is used to add your tissue type to the registry.
- Keep your contact information up-to-date so we can find you quickly if you are a possible match.
- You'll be listed on the registry until you're 61, unless you request to be removed from future searches.
- **If you are called as a possible match, it's important that you respond quickly,** and are willing to give a blood sample for further match testing.
- Share your decision to join the registry with family and friends now, so they'll support you later if you are called as a match.

## DIVERSIFY THE REGISTRY

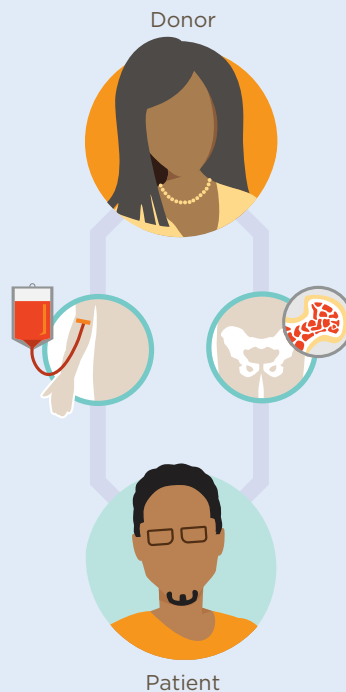
Adding more members with diverse ethnic backgrounds to the registry increases the variety of tissue types available, helping more patients find the match they need.



## WAYS TO DONATE

If you match a patient in need, there are two ways to donate. The patient's doctor chooses the donation method that is best for the patient.

**PBSC (peripheral blood stem cell) donation** is a non-surgical, outpatient procedure called apheresis. The donor receives a drug for 5 days prior to donation that increases the number of cells in the bloodstream. The cells are then collected during donation. The donor may experience head or muscle aches that disappear shortly after donation, and are typically back to their normal routine in 1 to 2 days.



**Marrow donation** is a surgical, outpatient procedure that takes place in a hospital operating room. While the donor is under anesthesia, doctors collect marrow from the back of their pelvic bone. After donation, donors may feel soreness in the lower back. Donors are typically back to their normal routine in 2 to 7 days.