
EAB 2025: Director's Overview

Mark E. Burkard, MD, PhD

April 2, 2025



CHANGING MEDICINE.
CHANGING LIVES.®

Center Director (Oct 2024)

Mark Burkard, MD PhD

Medical Oncologist with post-doctoral training in cell and molecular biology

Joined as HCCC Director October 2024

ASCI Member

EAB Member, University of Wisconsin Carbone Cancer Center

Positions

2024 – Present HCCC Director

2021 – 2024 Mary and Robert Gooze Professor, McArdle Labs, University of Wisconsin-Madison

2008 – 2021 Assistant, Associate Professor Internal Medicine, University of Wisconsin-Madison

2020 - 2024 UWCCC Associate Director of Genomics and Precision Medicine

2012– 2024 UW MSTP director/associate director

2018 – 2021 CTSA TL1 co-director

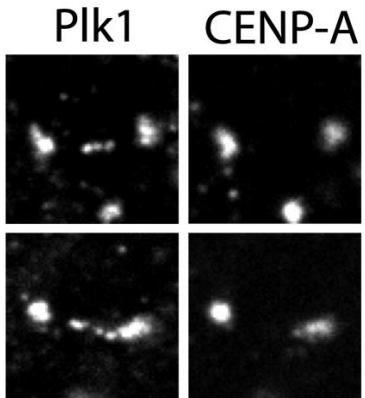
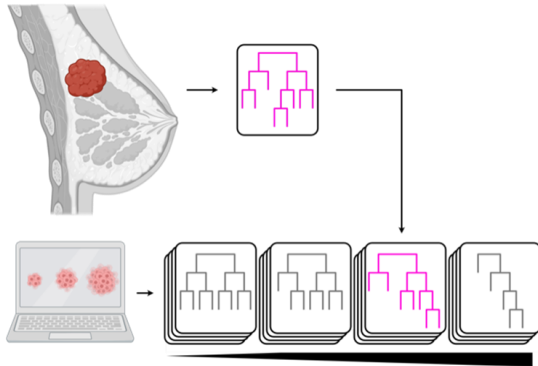
2008 – 2023 UWCCC Breast and Basket Disease Oriented Team leader

2005 – 2006 Chief Fellow, MSKCC



Center Director Research

Ongoing Research



CIN and cellular evolution

PNAS 2024

Plos Biology 2023

Elife 2022

R01CA284747

Kinetochore signaling

JCB 2024

EMBO Rep 2019

R01GM141068

SELECTED TRAINEES



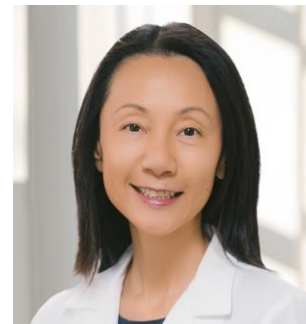
Gabrielle Rocque MD
Assoc Prof, UAB



Ryan Denu MD PhD
Onc Fellow, MDACC



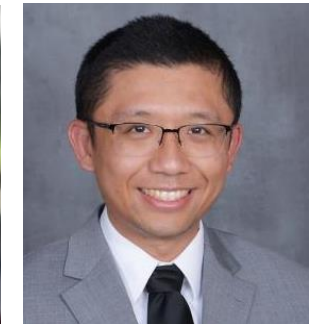
Andrew Lynch, PhD
Postdoc, MDACC



Ning Jin, MD
Assoc Prof, Ohio State



Roshan Norman PhD
Postdoc, MSKCC



Yang Hu MD PhD
Resident, Stanford

My HCCC areas of focus since Oct 1

Focus on catchment needs-- High Cancer Rates in Iowa

Improving Clinical Trial operations

Reorganizing CRS

Starting prescreening

Identifying informatics solutions for trial matching

Integrating Mission Cancer and Blood (clinic, research, NCORP)

Supporting HOBMT in leadership transition Jan 2025

Chair solid tumor search

Restructuring the Cancer Service Line

Planning a new research building

Key hires:

- T. Devery, AD Administration
- Laken Pins, Clinic Manager
- Service Line administrator (in process)
- Deputy Director Clinical Services (in process)



DIRECTOR'S OVERVIEW: SERVING IOWA

HCCC Mission: Defeat Cancer

Our vision is to decrease the burden of cancer in Iowa and beyond through rapid application and regional implementation of discoveries.

Topics



Serving Iowa



Activities

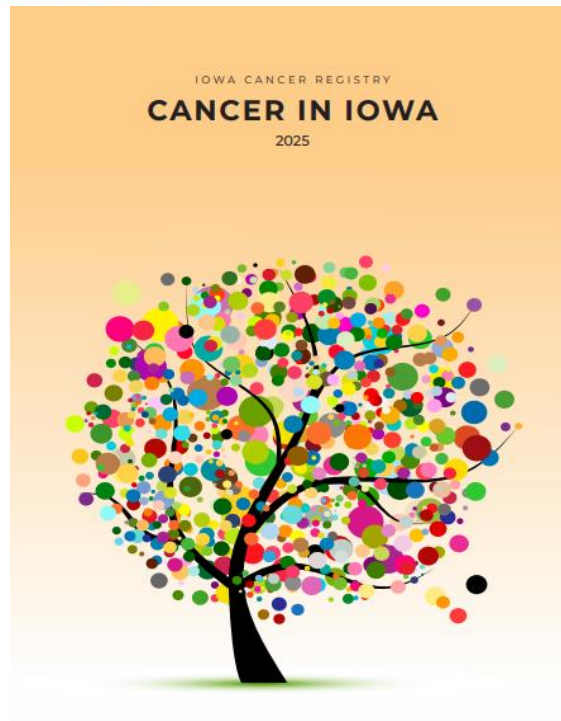


Essential characteristics

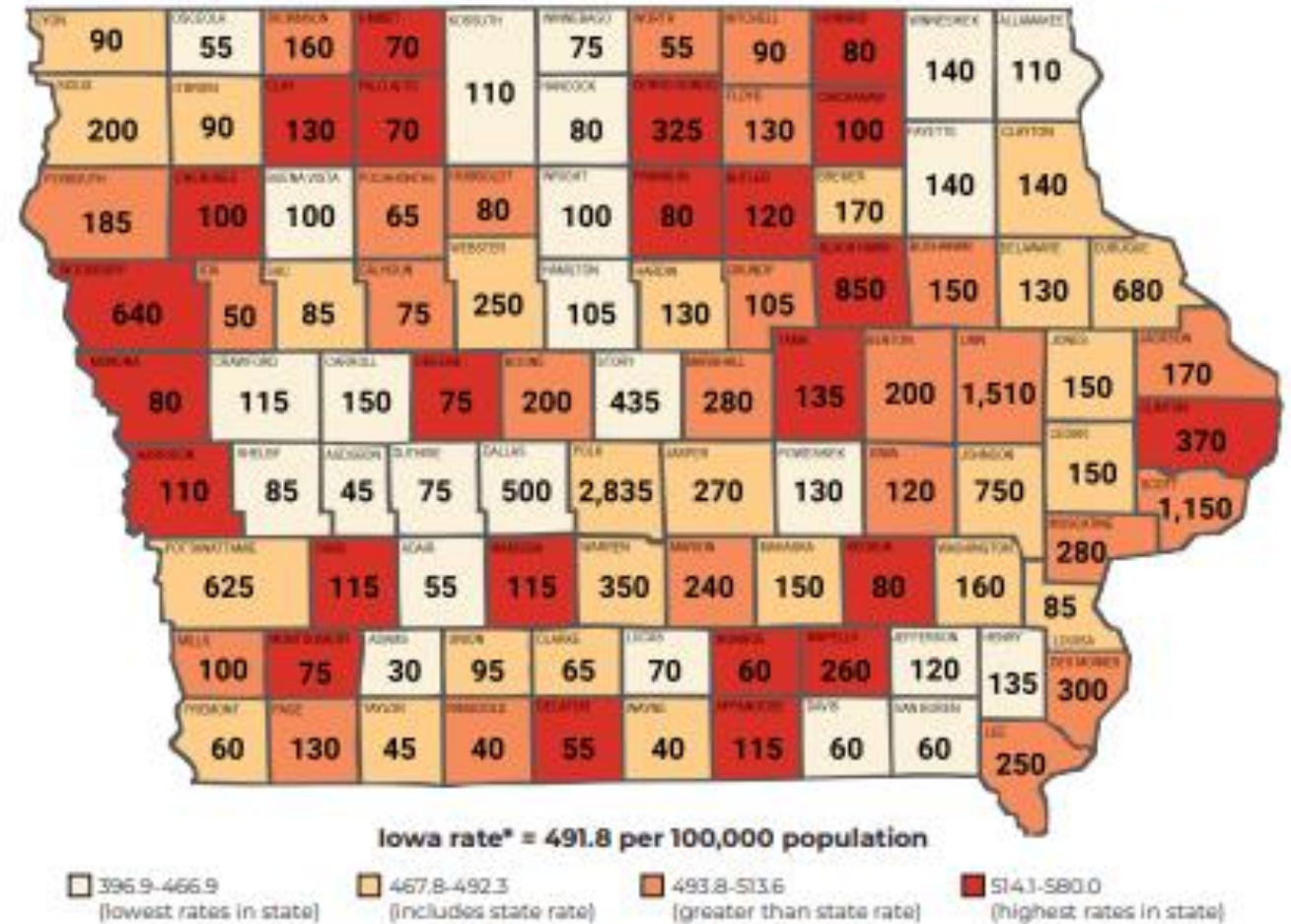


Looking forward

Cancer in Iowa



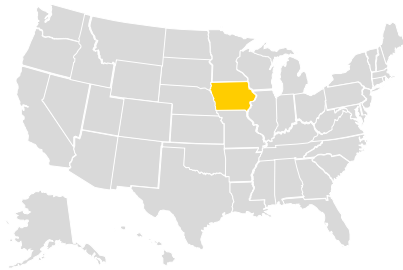
Estimates for new cancers in 2025



*Rates are age-adjusted and per 100,000 population, 2017-2021

2017-2021 Iowa Age-Adjusted Incidence

#2



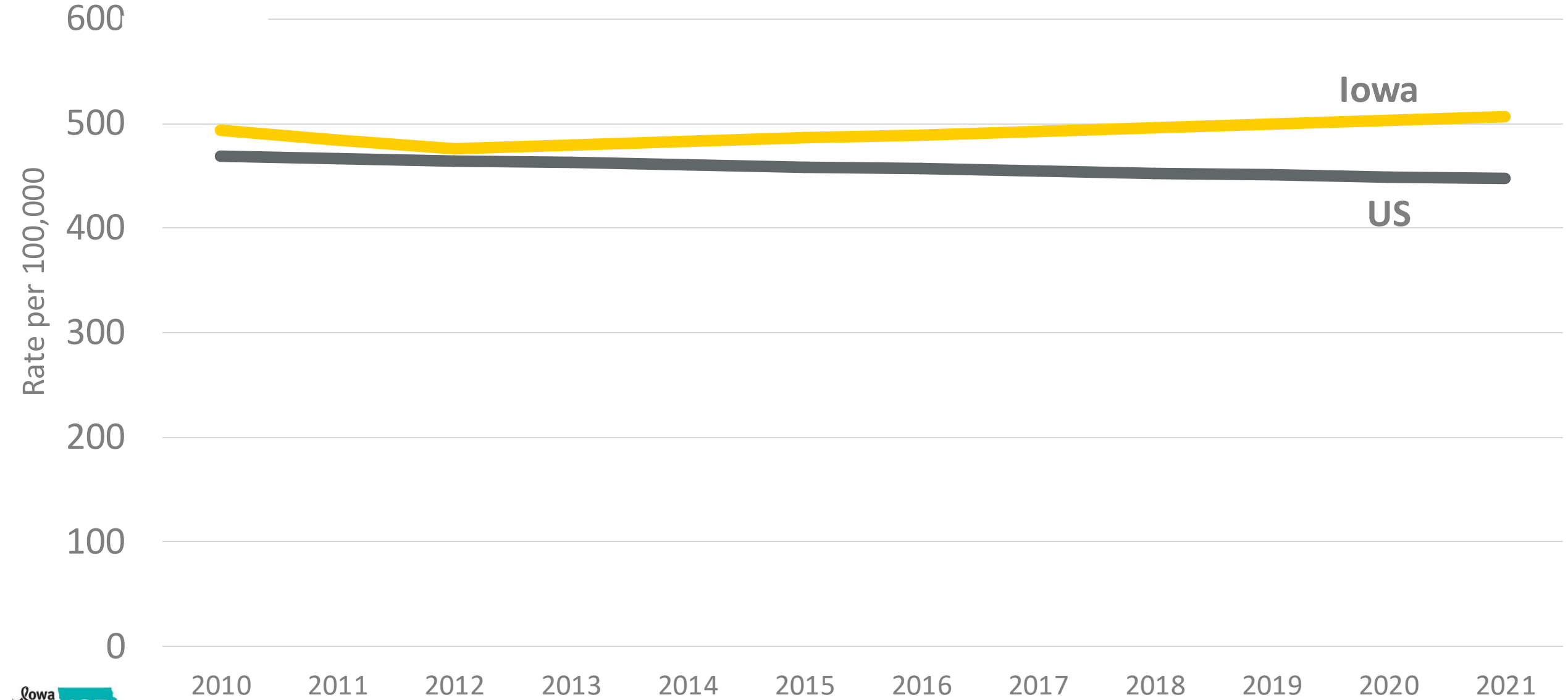
**Iowa ranks #2 in the US
for age-adjusted cancer
incidence rate (491.8)
(Kentucky is #1 – 513.7)**

Rising Incidence

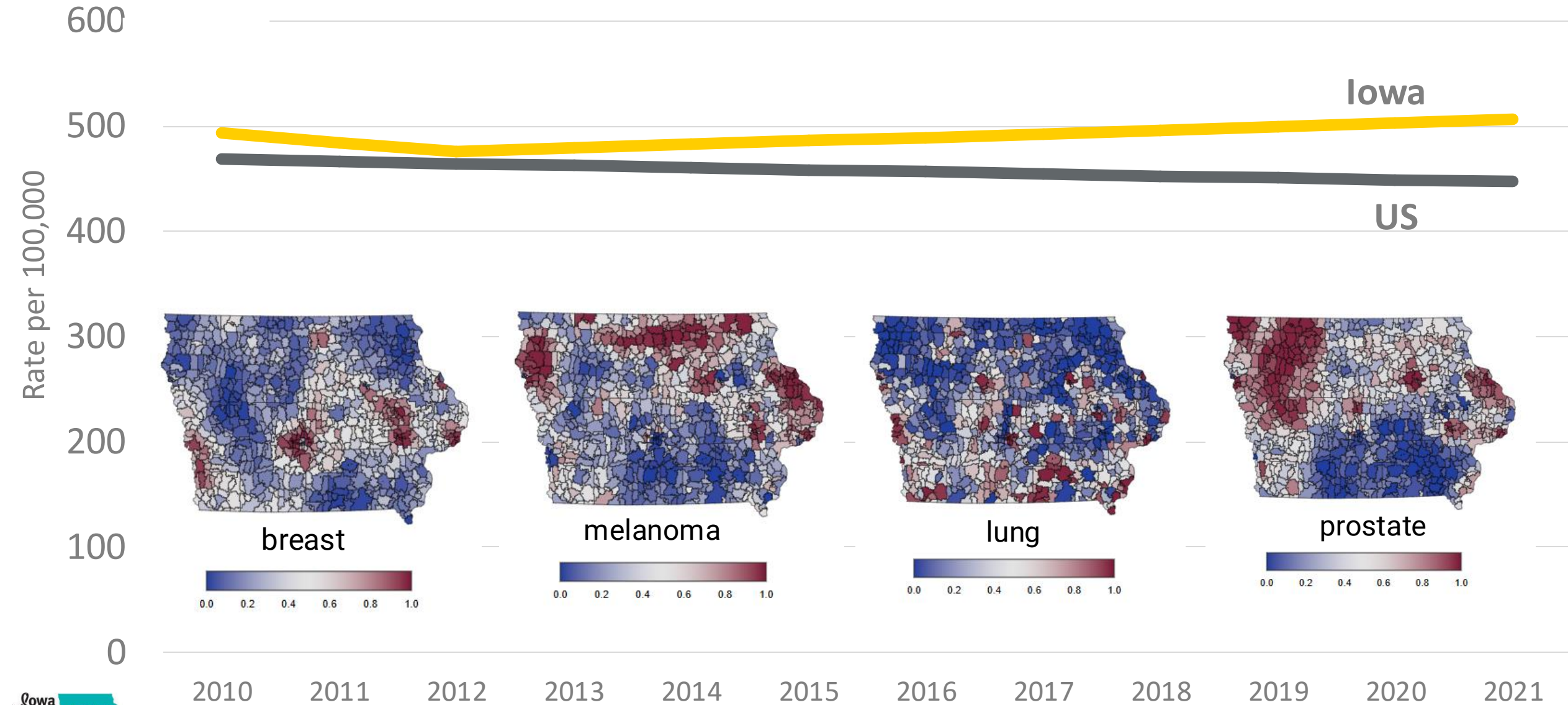


**Iowa is 1 of 2 states with a rising
age-adjusted incidence rate
(Utah is the only other – 412.7)**

Age-Adjusted Rate of New Cancers



Age-Adjusted Rate of New Cancers



Modifiable Risk Factors – Where does Iowa Rank?



**3rd in
binge drinking
(22%)**



**21st in
smoking
(15%)**



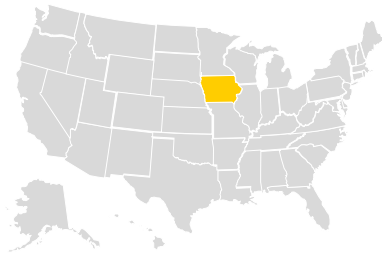
**11th in no
physical activity
(26%)**



**12th in
obesity
(37.4%)**

2017-2021 Iowa Age-Adjusted Mortality

#24



**Iowa ranks #24 in the US
for age-adjusted cancer mortality
rate**

(Mississippi is #1)

Decreasing Mortality



**Like the rest of the US, Iowa's
mortality rate is decreasing**
(except Wyoming, which is stable)



Dr. Mary Charlton



Dr. Natoshia Askelson



College of Public Health

1. Cancer in Iowa: 99 Counties Project

Addressing local cancer rates across Iowa
A collaboration of the HCCC with:

- *The Iowa Cancer Consortium
- *Iowa Cancer Registry
- *College of Public Health
- *Iowa Rural Health Association

<https://shri.public-health.uiowa.edu/cancer-data/cancer-in-iowa-99-counties-project/5R01CA254628-04S2>

2. Blue ribbon panel

Prioritizing research and interventions
to reduce cancer rates across Iowa

HCCC History and Timeline



George Weiner



Mark Burkard

2000

2005

2010

2015

2020

2026

NCI CCC Designation and renewals -->

Research Programs

CANCER GENES AND PATHWAYS



PROGRAM CO-LEADER
Dawn Quelle, PhD



PROGRAM CO-LEADER
Rebecca Dodd, PhD



ASST. PROGRAM LEADER
Erin Talbert, PhD

EXPERIMENTAL THERAPEUTICS



PROGRAM LEADER
Michael Wendt, PhD



ASST. PROGRAM LEADER
Kristi Thiel, PhD

FREE RADICAL METABOLISM AND IMAGING



PROGRAM CO-LEADER
Douglas Spitz, PhD



PROGRAM CO-LEADER
Yusuf Menda, MD

CANCER EPIDEMIOLOGY AND POPULATION SCIENCE



PROGRAM CO-LEADER
Mary Charlton, PhD



PROGRAM CO-LEADER
Mark Vander Weg, PhD



ASST. PROGRAM LEADER
Jess Gorzelitz, PhD

Program Funding

	7/1/2020	2/1/2025
NCI	\$1,357,848	\$2,452,713 ↑
Total Peer-Review	\$6,972,921	\$7,138,912 ↑

	7/1/2020	2/1/2025
NCI	\$2,045,114	\$2,302,150 ↑
Total Peer-Review	\$2,685,283	\$3,173,900 ↑

	7/1/2020	2/1/2025
NCI	\$1,399,602	\$1,925,500 ↑
Total Peer-Review	\$3,191,803	\$3,973,177 ↑

	7/1/2020	2/1/2025
NCI	\$1,903,599	\$1,413,719 ↓
Total Peer-Review	\$3,610,751	\$4,029,533 ↑

Collaborative Teams

RESEARCH PROGRAMS

Cancer Genes
and Pathways



Experimental
Therapeutics



Free Radical Metabolism
and Imaging



Cancer Epidemiology
and Population Science



CROSS CUTTING TEAMS

Stem Cell Transplant Cellular Rx
Pediatrics
AYA
Early Phase
Psychosocial
Palliative and supportive care
UIHC- Des Moines



MULTIDISCIPLINARY ONCOLOGY GROUPS

Breast	Lymphoma
GI Onc	Melanoma
GU Onc	Myeloma
Gyn Onc	Neuro Onc
Head/Neck	Sarcoma
Leukemia	Thoracic

Shared Research Resources

BIOMER



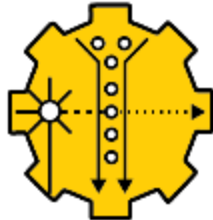
BIOSTATISTICS



CENTRAL MICROSCOPY



FLOW CYTOMETRY



GENOMICS/INFORMATICS



VIRAL VECTOR



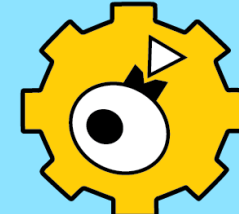
POPULATION RESEARCH



RADIATION FREE RADICAL



HUMAN IMMUNOLOGY



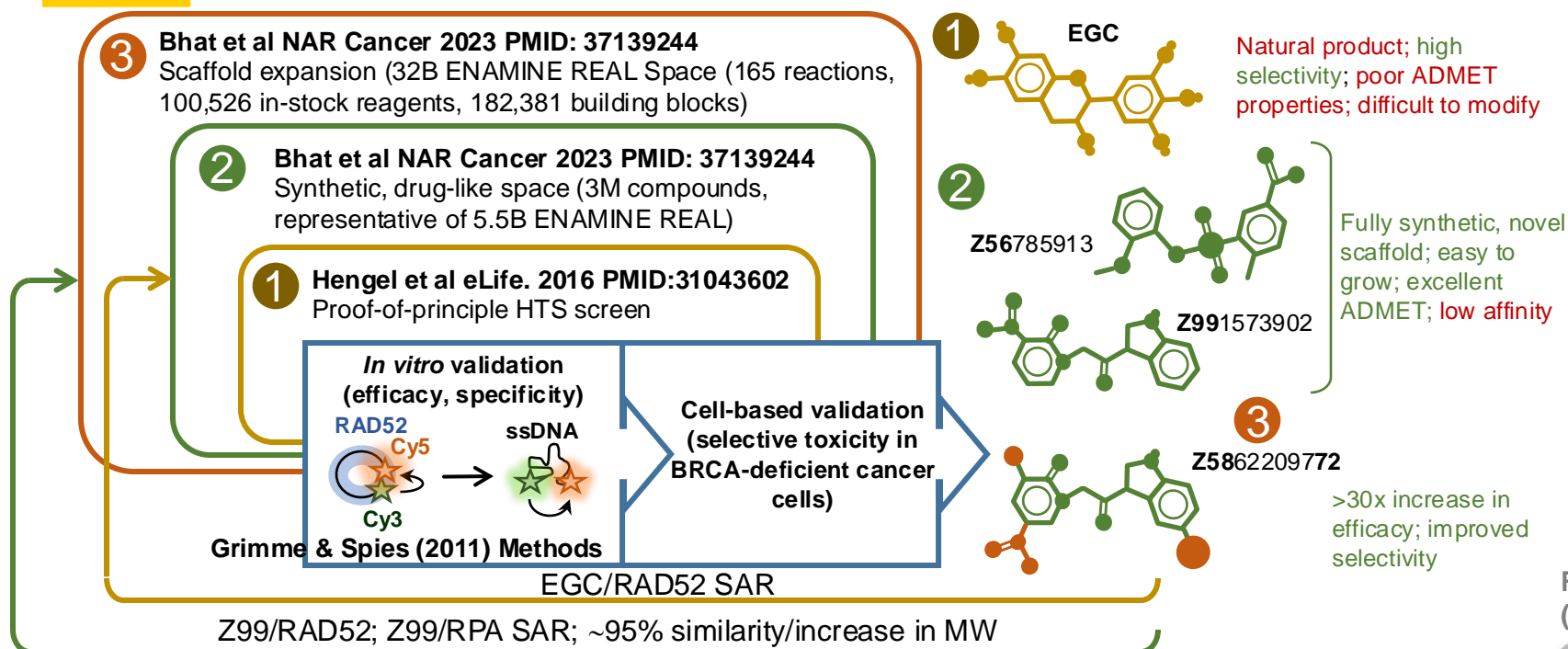
(Developing)

DIRECTOR'S OVERVIEW: STRONGER TOGETHER

Translational Science

Harnessing the genome-destabilizing propensity of cancer cells in development of novel therapeutics

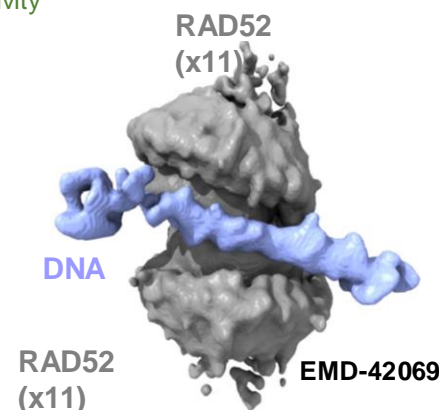
Targeting RAD52 DNA repair protein in cancer therapy (multilayer computer aided approach)



Maria Spies, PhD
Professor of Biochemistry and Molecular Biology
Staff Investigator, CCSG
HCCC Breast Cancer pilot awardee

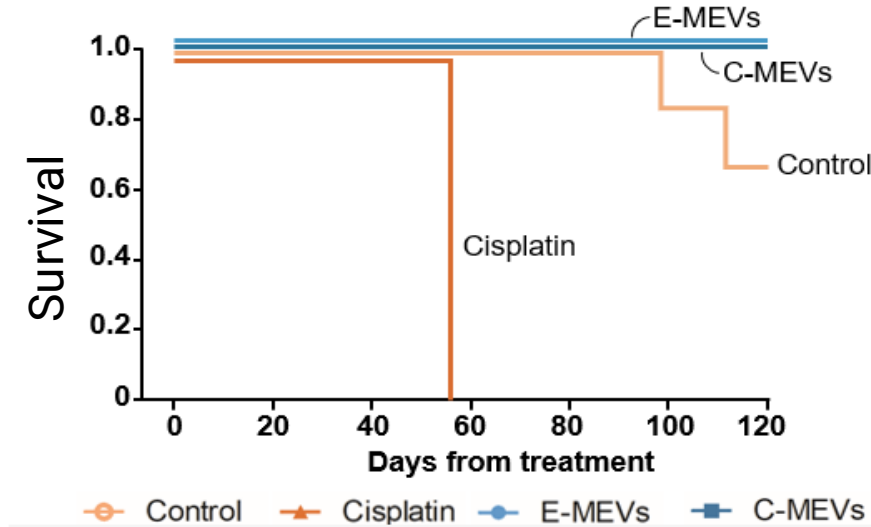
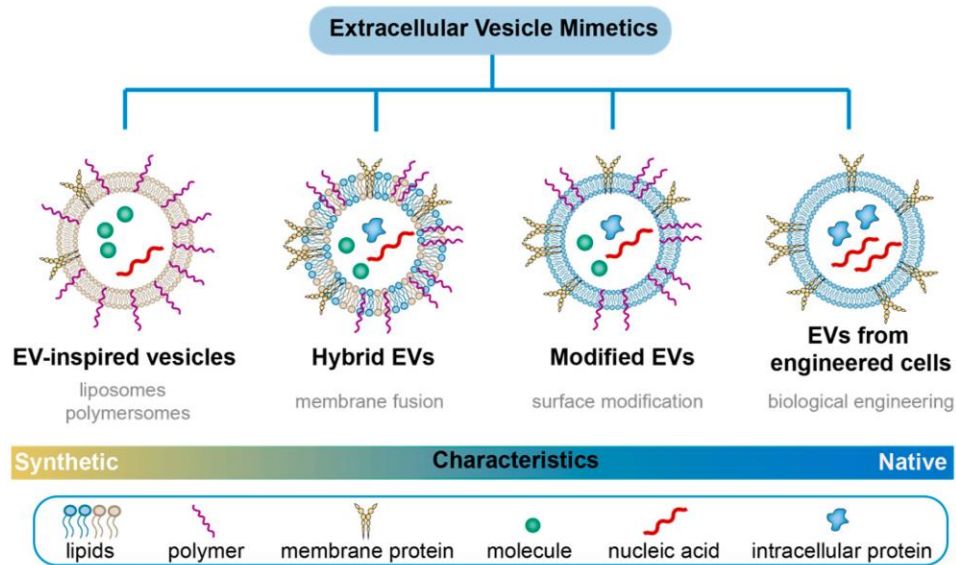
Unraveling new functions of RAD52 important for survival of BRCA-deficient cancers and new targetable features (structure, biochemistry, cell biology, superresolution imaging)

Malacaria et al Nat Commun. 2019 PMID:31043602
Honda, Razzaghi et al., Nature in press



NIH R01CA232425
NIH R21CA270300

M1 Macrophage Engineered Vesicles for Ovarian Cancer



Jill Kolesar, PharmD, MS, FCCP
Dean and Professor, Jean M. Schmidt
Chair in Drug Discovery

Funding:

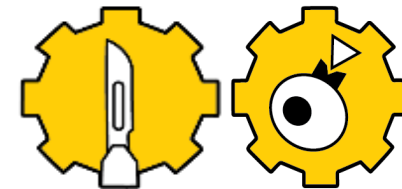
ARPA-H-ICHUB-24-101-461;
10/23/2024 – 10/22/2026 \$10,000,000

MIB Agents #1000405172
7/1/2024-6/30/2025 \$100,000

PON2 728 2000002500
07/01/20-06/30/24 \$629,000

Publications:

- Neupane KR, ACS Omega 2021, 6, 5, 3847–3857.
- Harvey BT, et al. ACS Omega. 2022 Dec 9;7(50):46222-46233.
- Schweer D et al. Front Oncol. 2023 Jan 11;12:1042730.
- Neupane KR et al. Adv Healthc Mater. 2023 Jun 28:e2301163.
- Neupane KR et al. Adv Healthc Mater. 2024 Sep 6:e2401906.
- Neupane KR et al. Adv Healthc Mater. 2024 Dec;13(30):e2401906.



Scientific Impact

CLINICAL CANCER RESEARCH | TRANSLATIONAL CANCER MECHANISMS AND THERAPY



CDK4/6-MEK Inhibition in MPNSTs Causes Plasma Cell Infiltration, Sensitization to PD-L1 Blockade, and Tumor Regression

Jordan L. Kohlmeier^{1,2}, Joshua J. Lingo^{3,4}, Courtney A. Kaemmer², Amanda Scherer⁵, Akshaya Warrier^{3,6}, Ellen Voigt^{3,4,6}, Juan A. Raygoza Garay⁴, Gavin R. McGivney³, Qierra R. Brockman¹, Amy Tang⁷, Ana Calizo⁸, Kai Pollard⁸, Xiaochun Zhang⁹, Angela C. Hirbe⁹, Christine A. Pratilas⁸, Mariah Leidinger¹⁰, Patrick Breheny^{4,11}, Michael S. Chiment¹², Jessica C. Sieren^{4,13}, Varun Monga^{4,5}, Munir R. Tanas^{1,3,4,10}, David K. Meyerholz¹⁰, Benjamin W. Darbro^{4,6,14}, Rebecca D. Dodd^{1,3,4,5,6}, and Dawn E. Quelle^{1,2,3,4,6,10}



Magnetic Resonance Imaging of Iron Metabolism with T₂* Mapping Predicts an Enhanced Clinical Response to Pharmacologic Ascorbate in Patients with GBM

Michael S. Petronek¹, Varun Monga², Kellie L. Bodeker¹, Michael Kwofie³, Chu-Yu Lee³, Kranti A. Mapuskar¹, Jeffrey M. Stolwijk¹, Amira Zaher¹, Brett A. Wagner¹, Mark C. Smith¹, Sandy Vollstedt¹, Heather Brown¹, Meghan L. Chandler¹, Amanda C. Lorack¹, Jared S. Wulfekuhle¹, Jann N. Sarkaria⁴, Ryan T. Flynn¹, Jeremy D.W. Greenlee⁵, Matthew A. Howard⁵, Brian J. Smith⁶, Karra A. Jones⁷, Garry R. Buettner¹, Joseph J. Cullen⁸, Joel St-Aubin¹, John M. Buatti¹, Vincent A. Magnotta³, Douglas R. Spitz², and Bryan G. Allen¹



Melanoma Symposium



Breast Cancer Symposium



Original Article

Radiomic biomarkers from chest computed tomography are assistive in immunotherapy response prediction for non-small cell lung cancer

Kimberly E. Schroeder¹, Luna Acharya², Hariharasudan Mani², Muhammad Furqan^{2,3}, Jessica C. Sieren^{1,3,4}

¹Department of Radiology, University of Iowa, Iowa City, IA, USA; ²Department of Internal Medicine, Hematology, Oncology and Blood and Marrow Transplantation, University of Iowa, Iowa City, IA, USA; ³Holden Comprehensive Cancer Center, University of Iowa, Iowa City, IA, USA; ⁴Roy J. Carver Department of Biomedical Engineering, University of Iowa, Iowa City, IA, USA

Contributions: (I) Concept and design: JC Sieren, M Furqan, KE Schroeder; (II) Administrative support: M Furqan, JC Sieren; (III) Provision of study materials or patients: KE Schroeder, L Acharya, H Mani, M Furqan; (IV) Collection and assembly of data: All authors; (V) Data analysis and interpretation: KE Schroeder, JC Sieren, M Furqan; (VI) Manuscript writing: All authors; (VII) Final approval of Manuscript: All authors.

Correspondence to: Jessica C. Sieren, PhD, Department of Radiology, University of Iowa, 200 Hawkins Dr. CC704GH, Iowa City, IA 52242, USA. Email: jessica-sieren@uiowa.edu.



Cancer Causes & Control (2023) 34:523–533
<https://doi.org/10.1007/s10552-023-01680-4>

ORIGINAL PAPER



Measuring and addressing health equity: an assessment of cancer center designation requirements

Jason T. Semprini¹ · Caitlin B. Biddell² · Jan M. Eberth³ · Mary E. Charlton⁴ · Sarah H. Nash^{4,5} · Katherine A. Yeager⁶ · Donoria Evans⁷ · Purnima Madhivanan⁸ · Heather M. Brandt⁹ · Natoshia M. Askelson⁵ · Aaron T. Seaman^{5,10} · Whitney E. Zahnd¹

Received: 31 October 2022 / Accepted: 27 February 2023 / Published online: 20 March 2023
© The Author(s) 2023

Scientific Impact- new grants 2024

Select New Grants

PI	Source	Focus	Program
Byrne	NCI	Novel extremophile-inspired radioprotectants	ET
London	NIAID	Sex-dependent Impairment of Nitric Oxide Signaling and Mitochondrial Metabolism in Radiation-Induced Cardio-Pulmonary Dysfunction	FRMI
Ear	DOD	Targeted approach of Nrf2 inhibition in neuroendocrine cancers	CGP
Dodd	DOD	Targeted Therapy for MPNST Metastasis	CGP
Burnett	NIDCR	Inflammation and EGFR crosstalk in HNSCC Therapy	FRMI
Askelson	CDC	UI Cancer Prevention and Control Research Network Collaborating Center	CEPS



Eureka!

Clinical Research Impact

Advancing the Standard of Care

THE NEW ENGLAND JOURNAL of MEDICINE

ORIGINAL ARTICLE

Three-Year Overall Survival with Tebentafusp in Metastatic Uveal Melanoma

Jessica C. Hassel, M.D., Sophie Piperno-Neumann, M.D.,
Piotr Rutkowski, M.D., Ph.D., Jean-Francois Baurain, M.D., Ph.D.,
Max Schlaak, M.D., Marcus O. Butler, M.D., Ryan J. Sullivan, M.D.,
Reinhard Dummer, M.D., John M. Kirkwood, M.D., Marlana Orloff, M.D.,
Joseph J. Sacco, M.D., Ph.D., Sebastian Ochsenreither, M.D.,
Anthony M. Joshua, M.B., B.S., Ph.D., Lauris Gastaud, M.D., Brendan Curti, M.D.,
Josep M. Piulats, M.D., Ph.D., April K.S. Salama, M.D.,
Alexander N. Shoushtari, M.D., Lev Demidov, M.D., Mohammed Milhem, M.D.,
Bartosz Chmielowski, M.D., Ph.D., Kevin B. Kim, M.D., Richard D. Carvajal, M.D.,
Omid Hamid, M.D., Laura Collins, M.S., Koustubh Ranade, Ph.D.,
Chris Holland, M.S., Constance Pfeiffer, Pharm.D., and Paul Nathan, M.D., Ph.D.

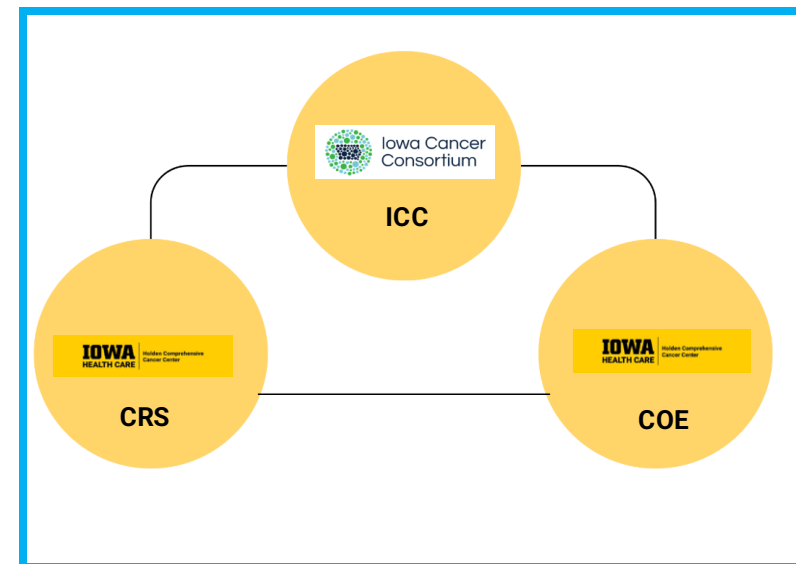
Clinical Research Innovations (AACI-CRI 2024)

- #1 of 155 entries– abstract and oral presentation – Finance
- Poster Pre-Study, Regulatory and Informatics
- AACI-CRI steering committee– Dr. Furqan

Supportive Oncology Research Program



Stephanie Gilbertson White, PhD, RN, FAAN
Associate Professor
Director, PhD Program



Pilot Funding

SEED GRANT MECHANISM	PURPOSE	EXAMPLES OF ROI
Mezhir Awards *	Support collaborative research teams	Spies & Malkova Multi-PI R01 CA232425 <i>Nature Communications</i>
Oberley Awards *	Support highly promising research initiatives within programs	K. Thiel, DOD Translational Team Science Award – Leslie, Gertz, Thiel, MPIs 09/2023-08/2027 Gorzelitz, Contributing to P01 effort in Cancer Survivorship
ACS IRG	Support for junior cancer researchers	Dodd now funded by ACS Research Scholar Grant and DOD
PACT Awards	Bring promising laboratory discoveries to the clinic through support of early phase trials	Yang – R37 CA238274 Furqan – NCT02420314 Lung IIT
MOG-Specific Awards	Projects selected by MOGs	Gordon – R37 CA217910 Quelle – <i>Clinical Cancer Research</i> Pufall – <i>Blood</i>
Wenger Travel Awards	Travel to present cancer research	Fath – Radiation Research Society Charlton – ACS Quality and Safety Conf.

* Partially supported by P30 Developmental Funds. To be discussed during “Developmental Funds” presentation.

Clinical Trials Accrual

Table 1: Interventional Treatment Accruals by MOG v3.07.2025

2025	Breast	GI Onc	GU Onc	Gyn Onc	Head and Neck	Leukemia	Lymphoma	Melanoma	Myeloma	Neuro Onc	Sarcoma	Thoracic	Total Accrual by MOG	
January	3	2	4	1	1	2	5	0	5	0	1	3	27	
February	2	4	1	1	1	0	4	0	0	1	2	8	24	
2025 YTD	5	6	5	2	2	2	9	0	5	1	3	11	51	
2024	13	36	19	8	32	13	40	15	23	16	10	62	288	↑ 8
2023	4	35	36	12	8	16	40	25	16	13	28	47	280	↓ 68
2022	8	32	34	19	12	37	34	30	11	27	50	54	348	↓ 121
2021	16	65	42	16	15	84	32	38	19	28	55	59	469	↑ 58
2020	6	63	55	21	20	57	24	39	4	24	34	64	411	

Action items:

- Restructure CRS into disease pods (done)
- Pre-screening integrated with Epic (done)
- Integrate Mission Cancer and Blood (in process)
- Recruit clinical investigators (in process)
- Molecular Tumor Board (pending)
- Informatics for trial matching (pending)

Education Impact

ICARE Program



ELC member



Lead HCCC Committee



ELC Fellow



Cancer Research Opportunities at Iowa
Summer 2024

HCCC Retreat



HCCC Seminar Series



EMERGING LEADERS COUNCIL

IOWA
HEALTH CARE

Holden Comprehensive
Cancer Center

Developing the next generation of cancer center leaders. Promising early career investigators and clinicians were selected from each research program to advise leadership on how to best leverage its resources to promote the success of early career faculty, how to accelerate the impact of their research, and providing them the opportunity to contribute in Holden decision-making.

* Chair, ** Vice Chair



Po Hien Ear, PhD
Assistant Professor
Surgery



Colin Kenny, PhD
Assistant Professor
Surgery



Vincent Wagner, MD
Assistant Professor
Obstetrics & Gynecology



Nicole Fleege, MD
Clinical Assistant Professor
Internal Medicine



Jessica Gorzelitz, PhD*
Assistant Professor
Health & Human Physiology



Helen Lillie, PhD
Assistant Professor
Communication Studies



Aaron Seaman, PhD
Assistant Professor
Internal Medicine



Whitney Zahnd, PhD
Assistant Professor
Health Management & Policy



Margaret Byrne, MD, MS
Clinical Assistant
Professor, Int. Medicine



Andrew Groves, MD
Clinical Assistant
Professor, Pediatrics



Kristina Guyton, MD
Clinical Assistant
Professor, Surgery



Adam Mailloux, PhD
Assistant Professor
Microbiology & Immunology



Jennifer Strouse, MD
Clinical Assistant
Professor, Int. Medicine



Shujie Yang, PhD
Assistant Professor
Pathology



Jessica Zimmerman, MD, MS
Assistant Professor
Pediatrics



James Holmes, PhD
Assistant Professor
Radiology



Claudia Mello-Thoms, MS, PhD
Associate Professor
Radiology



Michael Petronek, PhD
Research Assistant Professor
Radiation Oncology



Sarah Short, PhD**
Assistant Professor
Internal Medicine

Research
Program:
Cancer
Genes &
Pathways

Research
Program:
Cancer
Epidemiology
& Population
Science

Research
Program:
Experimental
Therapeutics

Research
Program:
Free Radical
Metabolism &
Imaging

DIRECTOR'S OVERVIEW: ESSENTIAL CHARACTERISTICS

Essential Characteristics

Physical space

Organizational capabilities

Transdisciplinary collaboration and coordination

Cancer focus

Institutional commitment

Center director



Home

UI identifies 3 distinctive areas of excellence for campus collaboration

**Cancer research
and patient care**

Writing

Brain Science

Physical Space

Laboratory/translational research on single campus

Holden members occupy 132,086 square feet of laboratory space

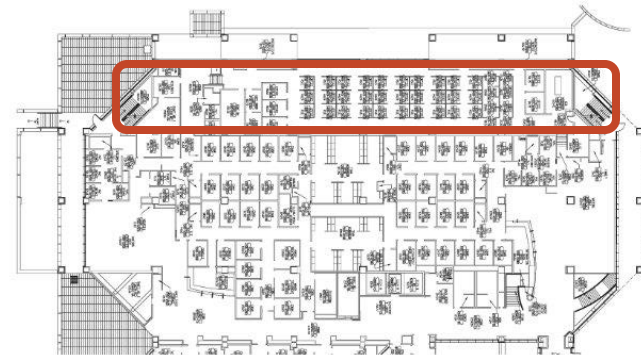
Clinical research space 7,400 sq feet

Laboratory space controlled by HCCC

Primary space for Holden is centrally located Holden Cancer Research Laboratories (32,000 sq ft)



Primary clinical research space directly adjacent to clinic



Planned Expansion

Iowa Board of Regents
approves planning for new
cancer laboratory research
building (Sept 24)

158,667 GSF
87,267 ASF

Intercollegiate
Cancer
Labs

Expected cost \$292M including
start-up for +30 faculty

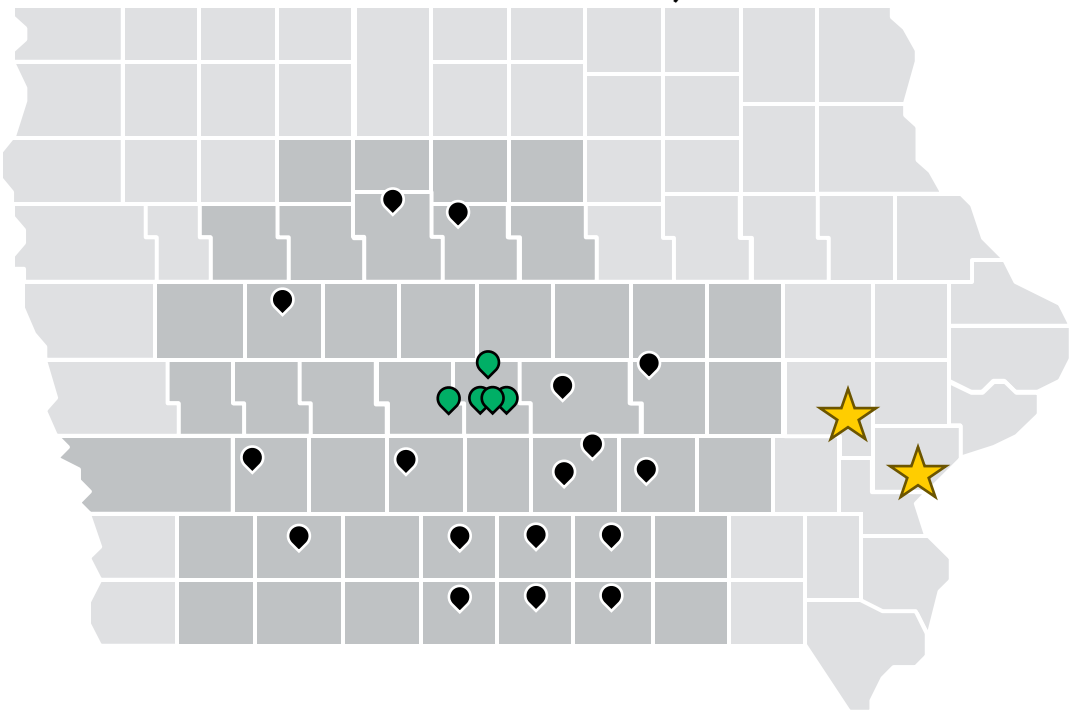
Goal is to open in 2025



<https://now.uiowa.edu/news/2024/09/ui-begins-planning-new-health-sciences-research-building>

Clinical Expansion- Des Moines

Mission Cancer and Blood is now
IOWA Healthcare as of Jan 1, 2025



Mission’s locations cover nearly 1.5 million Iowans, equating to roughly half of the state’s population.

Core Clinics

Ankeny
Mission Cancer + Blood Clinic

Clive
MercyOne Richard Deming
Cancer Center Radiation
Oncology

Des Moines
UnityPoint Health John Stoddard
Cancer Center

Waukee
Mission Cancer + Blood Clinic
(opening 2025)

Outreach Locations

Albia
Monroe County
Hospital

Atlantic
Cass Health

Carroll
St. Anthony Regional
Hospital

Centerville
Centerville Medical
Center

Chariton
Lucas County
Health Center

Coming
CHI Health MercyOne

Corydon
Wayne County Hospital

Fort Dodge
Trinity Regional
Medical Center

Grinnell
Grinnell Regional
Medical Center

Knoxville
Knoxville Hospital
and Clinic

Leon
Decatur County
Hospital

Newton
MercyOne Des Moines
Cancer and Infusion Center

Osceola
Clarke County
Hospital

Oskaloosa
Mahaska Health

Pella
Pella Regional
Health Center

Webster City
Van Diest
Medical Center

Winterset
Madison County
Health Care

Organizational Capabilities

INTERACTIONS WITH COMMUNITY

Restructured Community Advisory Board
Enhanced Iowa Cancer Consortium
Invested in Community Outreach and Engagement

EARLY PHASE CLINICAL TRIALS

Focus on phase I studies and IITs
Phase I director recruitment ongoing

OFFICE FOR CANCER CAREER ENHANCEMENT

PhD Program in Cancer Biology
Summer cancer research experience

RECRUITMENT

Multiple clinical investigators and other College of Medicine cancer researchers

Vikas Dudeja, MBBS, CCOM, Surgery

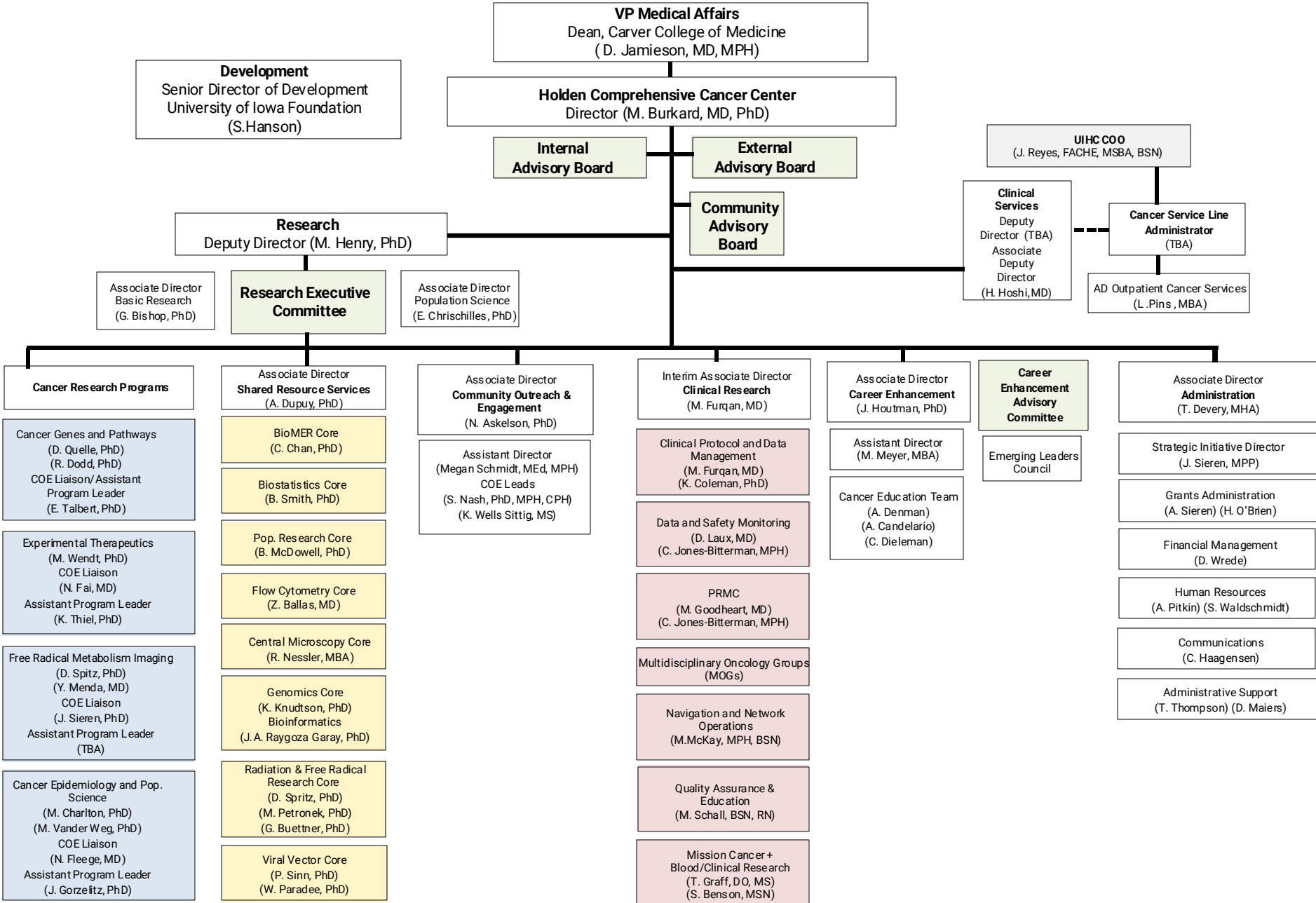
Jill Kolesar, PharmD, MS, FCCP, Pharmacy

Sean Fain, PhD, Vice Chair Research
Radiology

SHARED RESEARCH RESOURCES

New- Human Immunology Core





Community Advisory Board (CAB)



Some of our CAB and COE team members who attended the 2024 Iowa Cancer Summit in October

Internal Advisory Board (IAB) Roster

IAB meets regularly on a quarterly basis

IOWA
HEALTH CARE

Holden Comprehensive
Cancer Center



Jill Kolesar (Chair),
PharmD, MS, FCCP,
Dean of College of
Pharmacy



Bryan Allen, MD, PhD,
Chair/DEO Radiation
Oncology



Mark Burkard, MD, PhD,
HCCC Director



Tina Devery, MHA, HCCC
Associate Director for
Administration



Vikas Dudeja, MBBS,
FACS, Chair/DEO
Department of Surgery



Lois Geist, MD, MS,
Associate Provost for
Faculty



Michael Henry, PhD, HCCC
Deputy Director of
Research



Kim Hunter, DNP,
MBA, RN, NEA-BC,
Chief Nurse Executive



Edith Parker, MPH, DrPH,
Dean of College of Public
Health



Chris Pettker, MD,
Chair/DEO Obstetrics
and Gynecology



Jody Reyes, FACHE,
MSBA, BSN, COO of UI
Health Care



Upi Singh, MD,
Chair/DEO Internal
Medicine










Pat Winokur, MD,
Executive Dean of Carver
College of Medicine



Li Wu, PhD, Chair
Microbiology and
Immunology

Transdisciplinary Collaboration and Coordination (2024)

		TOTAL PUBS	HIGH-IMPACT JOURNALS	INTRA- PROGRAMMATIC	INTER- PROGRAMMATIC	INTER- INSTITUTIONAL
	CGP	81	10 (12%)	24 (30%)	27 (33%)	39 (48%)
	ET	102	14 (14%)	17 (17%)	33 (32%)	68 (67%)
	FRMI	65	7 (11%)	22 (34%)	12 (18%)	32 (50%)
	CEPS	117	15 (13%)	38 (32%)	18 (15%)	70 (60%)
	Total POPULATION RESEARCH	365	46 (13%)	101 (28%)	90 (25%)	209 (57%)
	RADIATION FREE RADICAL				Unique shared research resources serve as national resources for cancer research	
	VIRAL VECTOR					

Cancer Focus

Funding Source	7/1/2020	# Projects 2020	2/1/2025	# Projects 2025
NCI Peer-Reviewed	\$10,904,247	49	\$11,473,539	52
Other NIH Peer-Reviewed	\$7,490,887	37	\$7,519,218	34
Other Peer-Reviewed	\$3,145,090	24	\$3,422,206	21
Total Peer-Reviewed	\$21,540,224	110	\$22,414,963	107
Industry Non Peer Review	\$4,805,675	57	\$7,745,765	121
Other Non Peer Review	\$1,984,259	25	\$3,127,684	25
Subtotal Non Peer Review	\$6,789,934	82	\$10,873,449	146
Grant Total (All Projects)	\$28,330,158	192	\$33,288,412	253

Institutional Commitment

HCCC Director oversees cancer activities at the University of Iowa including research, clinical and educational missions

Reports to VP Medical Affairs

Works closely with

- Various deans
 - Vice President for Research
 - COO, CEO Iowa Health Care
-

New Institutional Commitment: \$30M
(\$6M per year 5 years)

HCCC Philanthropic Endowments: \$47.8M

Annual ongoing institutional support: \$2.6M



Authority over

- Cancer service line
 - HCCC membership
 - Cancer philanthropy
 - Cancer center discretionary funding
 - Cancer Biology Graduate program
 - Research space
-

Represents cancer on

- Enterprise Committee
- Medical Council
- Clinical Services Committee
- Basic Science Heads Committee
- UI Research Foundation
- VPR Strategic Planning

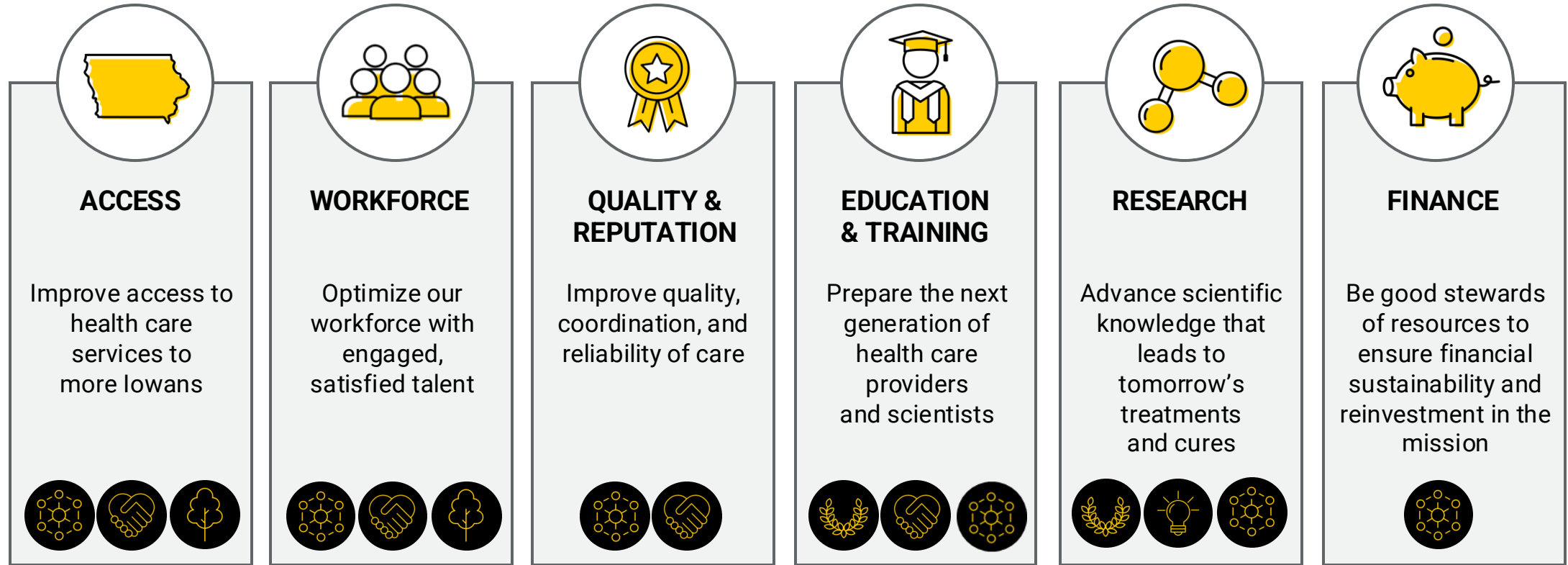
Looking Forward

Strategic plan

Recruitments

Annual priorities

Strategic Plan: UIHC's Strategic Priorities



University of Iowa's
Strategic Plan Priorities



Innovative Research
and Creative Discovery



Holistic Well-being
and Success



Excellence in
Education



Welcoming and
Inclusive Environment



Transformative
Societal Impact

HCCC Core Team Planning Members

Each Sub-Team engaged additional participants across the HCCC in the planning process

	<u>Owners</u>	<u>Inputs</u>	<u>Outputs</u>
Research Programs	E. Chrischilles* G. Bishop* A. Simons-Burnett D. Gordon A. Dupuy	CCSG Critiques EAB reports Program Metrics SWOT w/ PLs	Progress Report SWOT Report
Shared Resources	A. Dupuy* G. Bishop E. Chrischilles J. Houtman	CCSG Critiques; EAB reports Usage/Publication Metrics SWOT w/ SR Directors User Surveys	SWOT Report SR Scorecard for EAB
Cross-Cutting Functions	N. Askelson* J. Houtman	CCSG Critiques EAB reports CAB meetings SWOT w/ stakeholders*	Progress Report SWOT Report
HCCC Members	T. Devery D. Maiers	Survey Townhall Presentations	Member Comments
Clinical Research	M. Furqan* N. Askelson D. Gordon	CCSG Critiques EAB reports Data Tables Input from MOG CTLs	SWOT Report Progress Report
Clinical Services	B. Allen I. Lizarraga; K. Huber-Keener U. Farooq B. Johnson, Riemann	UI Health Care Strategic Plan Input from Medical Directors & MOG Clinical Leads	Cascade Clinical Strategies into HCCC Priorities

Goals for 2025

Programmatic:

- Restructuring Cancer Service Line/Integrating with MCB
- Blue Ribbon panel
- Molecular Oncology
 - Tumor board
 - EPIC genomics
- Clinical trial informatics
 - Prescreening
- Therapeutic Translation
- State-wide grand rounds and tumor boards

Strategic recruitments:

Thematic:

- Drug discovery and development
- Cancer Immunology
- Prevention and survivorship
- Obesity

Disease focused:

- Neuroendocrine SPORE
- Sarcoma SPORE
- Prostate and Breast Cancer

Leadership recruitments:

- AD Clinical Research
- Phase I Director
- Deputy Director for Clinical Services
- HOBMT Division Director

CONCLUSION/DISCUSSION

IOWA
HEALTH CARE

Holden Comprehensive
Cancer Center

