

Office of Consultation and Research
in Medical Education
(OCRME)

Activities
2008



Kristi J. Ferguson, Ph.D., Director
OCRME, 1204 Medical Education Building
Iowa City, IA 52242-1000
Phone: (319) 335-8901
FAX: (319) 335-8904
<http://www.healthcare.uiowa.edu/ocrme>

Mission Statement

OCRME links research with educational practice through its work with faculty, staff, and students. We apply proven knowledge and technology in order to produce innovative education within the limits of available resources. We provide coordination of services and products that support curriculum development, faculty development, measurement, evaluation, and educational research. We recognize the value that each member contributes to our efforts and we strive to set an example of thoughtful application of validated methods in our own teaching and research.

Table of Contents

Summary of Annual Report	1
Personnel 2007	3
Organizational Chart	4
Curriculum Development	5
Curriculum Development Projects.....	5
Teaching Skills Development and Faculty Development	7
Programs	7
Workshops and Presentations on Teaching Skills and Scholarship.....	9
Research, Measurement, and Evaluation	15
Research, Measurement, and Evaluation Projects	15
Computer-Based Testing	17
Presentations	19
Publications	23
Service to the College, University, and Academia	25
Committee Membership.....	25
Teaching in College of Medicine and Other Courses.....	25
Professional Organizations	27
Addendum: Report of the Advisory Committee to the Office of Consultation and Research in Medical Education	29
Committee Members.....	29
Educational Development Fund Proposals	30
Faculty Awards	31

Summary of Annual Report

The Office of Consultation and Research in Medical Education (OCRME) offers assistance to those involved in teaching and education throughout the College of Medicine by providing support for curriculum development, faculty development, and educational research. OCRME consultants provide individual consultations, serve as project staff, conduct workshops, and assist in preparing grant proposals. Consultants also engage in their own research and scholarly activities.

From January 1 to December 31, 2008, OCRME personnel

- Supported the College through over 75 projects in curriculum development, faculty development, measurement, evaluation, and research;
- Supported test development and administration for 18 courses, clerkships, and programs;
- Conducted or sponsored over 70 workshops, seminars, and presentations attended by over 950 on-campus and community faculty and staff;
- Continued to conduct the Medical Education Degree Program and the Medical Education Certificate;
- Assisted faculty in the preparation and implementation of Educational Development Fund proposals;
- Gave 10 oral and poster presentations at regional, national, or international conferences;
- Authored or co-authored 10 articles that were accepted for publication or appeared in peer-reviewed journals and 3 book chapters;
- Reviewed manuscripts for 16 peer-reviewed journals and conference proposals for the Association of American Medical Colleges and other professional organizations; and
- Served on numerous College, University, and professional committees.

Personnel 2008

Office of Consultation and Research in Medical Education (OCRME)

Director

Kristi Ferguson, Ph.D., Associate Professor, General Internal Medicine, Faculty Development and Evaluation

Faculty Consultants

Rick Axelson, Ph.D., Assistant Professor, Family Medicine, Program Evaluation

Clarence (Clare) Kreiter, Ph.D., Professor, Family Medicine, Statistics and Measurement

Marcy Rosenbaum, Ph.D., Associate Professor, Family Medicine, Faculty Development

Professional and Scientific Consultants

Susan Lench, M.A., Program Associate I, Associate Director, Instructional Design

Jeremy McCollum, A.S., System Administration and Programming II, Computer-Based Education¹

Jason McGovern, B.A., Applications Development and Support II, Computer-Based Courseware²

Jeff Pettit, Ph.D., Instructional Designer, Adjunct Instructor, Teaching Skills Consultant

Roger Steffen, Information Technology Support I, Curriculum Support

Justin Stone, M.A., Applications Development and Support III, Computer-Based Education

Support Staff

Stephanie Burnett, Secretary III

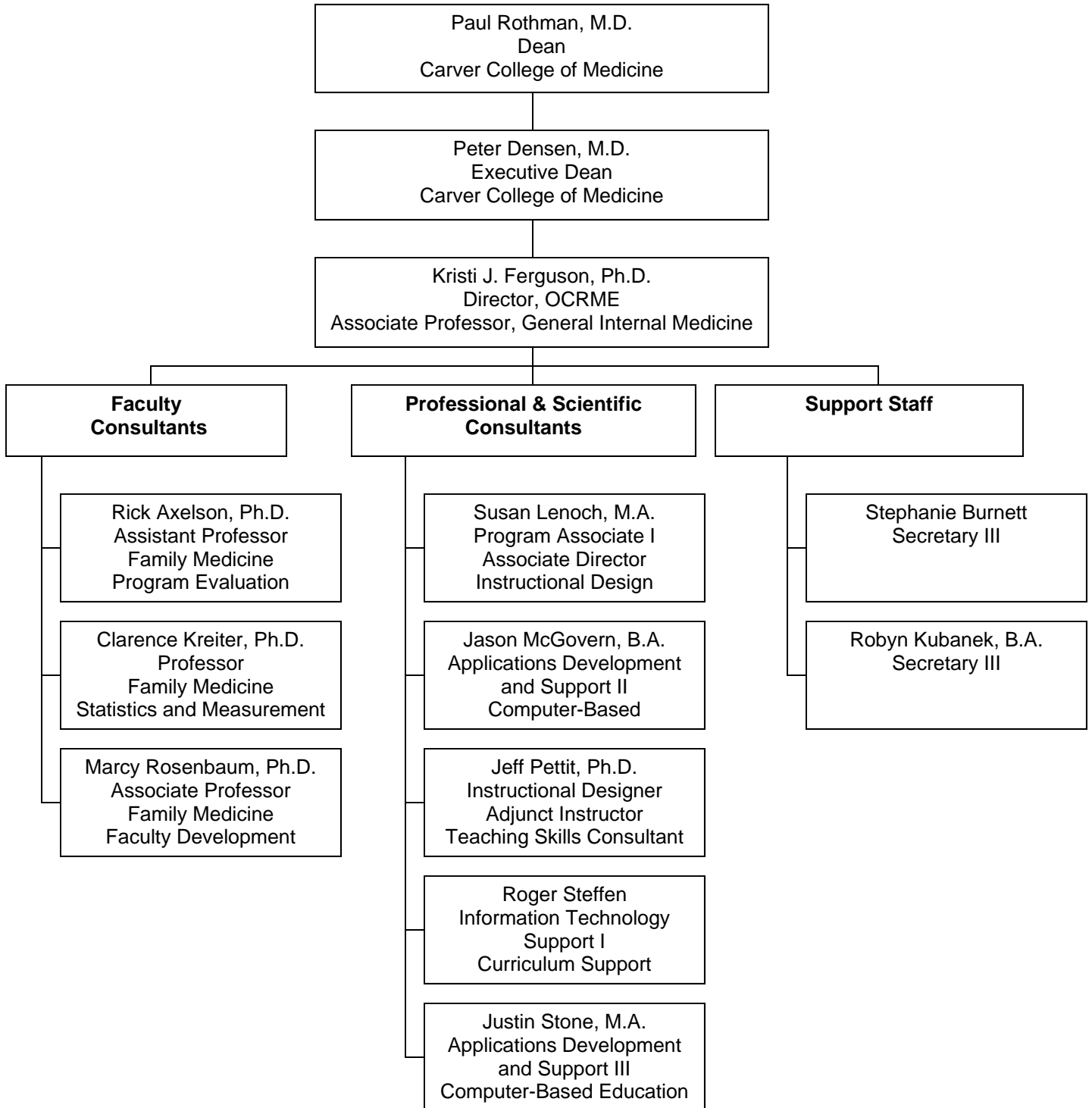
Robyn Miessler-Kubanek, B.A., Secretary III

¹Left the Office in 2008

²Joined the Office in 2008

Organizational Chart

Office of Consultation and Research in Medical Education (OCRME)



January 2009

Curriculum Development

OCRME assists faculty and staff to design, develop, implement, and evaluate academic programs and instructional methods, including computer-based applications. We help develop support systems for course evaluation.

During 2008, OCRME staff

- Participated in over 20 curriculum development projects involving faculty and staff from several departments and the Office of Student Affairs and Curriculum (OSAC). The table below lists these projects. See also the Research and Evaluation section.
- Provided a dozen less intensive consultations related to curriculum such as advising on instructional design, reviewing training programs, providing resources on curriculum topics, providing assistance with video for instruction, and assisting in evaluation of curricula and training programs.
- Served on several education-related committees. (See the section on Service.)

Curriculum Development Projects

Project	Collaborators	OCRME Consultants
<i>Longitudinal and Topic-Specific Curriculum Initiatives</i>		
Developing a Comprehensive Communication Skills Curriculum	George Bergus, Family Medicine; Ellen Franklin, Office of Student Affairs and Curriculum; Foundations of Clinical Practice Directors; Curriculum Coordinators	Marcy Rosenbaum
End of Life Educators Group	Ann Broderick, Internal Medicine; Jeffrey Lobas, Ray Tannous, Pediatrics; Michelle Weckmann, Psychiatry	Marcy Rosenbaum
Task Force on Interdisciplinary Education	Joel Gordon, Internal Medicine; David Asprey, Physician Assistant Program	Jeff Pettit, Kristi Ferguson
Communication Skills Remediation	George Bergus, Family Medicine; Ellen Franklin, Office of Student Affairs and Curriculum	Marcy Rosenbaum
Pediatric Fellow Professional Reflection Seminars	Jack Widness, Donna D'Alessandro, Pediatrics; Dennis Harper, College of Education; Beverly Klug, Psychiatry; James Carroll, Internal Medicine	Marcy Rosenbaum

Project	Collaborators	OCRME Consultants
Evidence-Based Medicine Curriculum at Palmer College	Mark Wilson, Gary Rosenthal, Internal Medicine	Kristi Ferguson
Nurse Decision Making in Depression ¹	Marianne Smith, Kathleen Buckwalter, College of Nursing	Susan Lench
Tobacco Prevention and Cessation at US Medical School ¹	Jeff Wilson, Internal Medicine; Jerold Woodhead, Pediatrics; George Bergus, Family Medicine; Boston University and 11 other medical schools	Kristi Ferguson, Justin Stone, Stephanie Burnett

Course/Clerkship Curricula

Foundations of Clinical Practice I: Emotional Patient Session		Marcy Rosenbaum
Foundations of Clinical Practice I: In Their Own Words	Loreen Herwaldt, Internal Medicine	Marcy Rosenbaum
Foundations of Clinical Practice IV: End of Life Module	Jeffrey Lobas, Pediatrics; Ann Broderick, Internal Medicine	Marcy Rosenbaum
Bad News Sessions	Paul Mulhausen, Internal Medicine; Robin Paetzold, Office of Student Affairs and Curriculum	Marcy Rosenbaum

Technology Focused

Performance Based Assessment Checklist (PHP)	Ellen Franklin, Office of Student Affairs and Curriculum	Justin Stone
Performance Based Assessment Payroll Software	Ellen Franklin, Office of Student Affairs and Curriculum	Justin Stone
Human Organ Systems: Water Homeostasis Program	Joel Gordon, Internal Medicine	Justin Stone
Renal Physiology Courseware	Joel Gordon, Lisa Antes, Internal Medicine	Justin Stone
Patient Case Simulator (PCS)	DeeDee Stafford, Rheumatology; FCP IV Faculty	Justin Stone
Patient Case Simulator (PCS) Full (Simulation Software)	Internal Medicine	Justin Stone
Curriculum Database	Curriculum Committee	Roger Steffen, Kristi Ferguson
Module Maker/Module Viewer		Justin Stone
X-Ray Module in Module Viewer	Lisa Antes, Jane Rowat, Internal Medicine	Justin Stone

¹ Funded by external grant

Teaching Skills Development and Faculty Development

OCRME assists faculty and staff to develop their teaching skills through workshops, self-instructional programs, and individual consultations. We also assist departments to implement and evaluate their faculty development programs.

In 2008, OCRME

- Continued the Medical Education Degree program and completed development of 8 new courses.
- Implemented a Medical Education Certificate program.
- Offered an elective course on teaching methods to fourth-year medical students.
- Provided intensive training for 7 Teaching Scholars and held quarterly meetings with previous scholars.
- Provided training for Community Teaching Scholars and helped them provide 6 regional workshops attended by preceptors.
- Conducted workshops on teaching and leadership skills for residents in 9 departments.
- Provided over 25 additional workshops and seminars on campus with over 450 attendees.
- Coached several individuals regarding their teaching skills.
- Provided advice to several individuals on developing training on teaching skills and in locating references and resources on teaching skills topics and faculty development.

Programs

Project	Collaborators	OCRME Consultants
<i>Faculty and the College Community at large</i>		
Medical Education Degree	Office of the Dean	Kristi Ferguson, Clarence Kreiter, Marcy Rosenbaum, Rick Axelson, Susan Lench, Jeff Pettit, Stephanie Burnett
Teaching Scholars	College of Medicine Administration	Kristi Ferguson, Marcy Rosenbaum, Susan Lench, Jeff Pettit, Stephanie Burnett
Community Teaching Scholars	Office of Statewide Clinical Education Programs	Marcy Rosenbaum, Kristi Ferguson, Jeff Pettit, Susan Lench

Project	Collaborators	OCRME Consultants
Faculty Teaching Skills Workshops	Jill Endres, Kelly Skelly, Family Medicine; Rachel Miller, Internal Medicine; Nancy Rosenthal, Pathology	Marcy Rosenbaum, Kristi Ferguson, Susan Lench, Justin Stone, Stephanie Burnett
Teaching Skills Seminars	Rachel Miller, Internal Medicine; Alison Abreu, Psychiatry; Mohamed Radhi, Oncology	Marcy Rosenbaum, Kristi Ferguson, Susan Lench, Stephanie Burnett
Anesthesia Faculty Development	Bradley Hindman, Anesthesia	Jeff Pettit, Marcy Rosenbaum, Clare Kreiter
Team Basics & Challenges	Office of Statewide Clinical Education Programs	Jeff Pettit
Evaluation Workshop and Supporting Materials		Rick Axelson, Susan Lench
Central Group on Educational Affairs website		Jason McGovern
Web-Based Module for Training Small Group Facilitators	Steven Maravetz, Health Science Relations; Jim Hollensbe, Medicine Administration	Kristi Ferguson, Justin Stone

Residents, Fellows, and Students

Teaching Skills for Medical Students		Jeff Pettit, Kristi Ferguson
Fellows as Clinical Educators (FACE) Program	James Carroll, Scott Vogelgesang, Internal Medicine	Marcy Rosenbaum
Future Chief Residents Leadership Symposium	Mark Wilson, GME Office	Jeff Pettit
Neurosurgery Resident Leadership Program	Jeremy Greenlee, Matthew Howard, Neurosurgery	Jeff Pettit
Teaching Skills for Pediatric Fellows	Jack Widness, Thomas George, Jerold Woodhead, Pediatrics	Marcy Rosenbaum
Resident's Teaching Handbook		Jeff Pettit
Development of Resident Teaching Skills in Obstetrics/Gynecology	Gregory Skopec, Nanci Wieneke, Obstetrics/Gynecology	Jeff Pettit
Development of Resident Teaching Skills in Surgery	William Sharp, Kimberly Ephgrave, Beverly Goodwin, Carlen Ribble, Rachel Nicholson, Surgery	Jeff Pettit
Surgery Resident Leadership Program	William Sharp, Surgery	Jeff Pettit
Surgery Residents as Educators Program ²	Kimberly Ephgrave, Hisakazu Hoshi, Surgery	Jeff Pettit
Family Medicine Resident Team Development	Amy Lindaman, Kate Thoma, Family Medicine	Jeff Pettit

²Funded by EDF

Workshops and Presentations on Teaching Skills and Scholarship

General Education and Multi-Topic

Teaching Scholars Program. Monthly half-day and quarterly teaching sessions for scholars.
Instructional Design I, January 18, Susan Lench.
Effective Feedback, January 18, Kristi Ferguson with Jerold Woodhead, Pediatrics.
Teaching Philosophy, February 15, Kristi Ferguson.
Instructional Design II, February 15, Susan Lench.
Clinical Teaching, March 28, Marcy Rosenbaum.
Evaluating Teaching and Learning, April 18, Kristi Ferguson.
Teaching Portfolios, April 18, Kristi Ferguson with Scott Vogelgesang, Internal Medicine.
Effective Workshops for Teaching Communication to Students, Residents, and Practicing Clinicians, May 16, Jonathon Silverman and Marcy Rosenbaum.
Podcasting, August 15, Susan Lench.
Wiki Wiki What? New Technology for Learning, August 15, Kathryn Skhal, Hardin Library.
Mentoring, November 7, Jeff Pettit and Kristi Ferguson.

Teaching Skills Seminars. Monthly noon seminars for the Carver College of Medicine faculty and staff.

Effective Test Question Writing, January 30, Rachel Miller, Internal Medicine.
Clinical Teaching, February 13, Marcy Rosenbaum with Alison Abreu, Psychiatry.
Small Group Teaching, March 5, Kristi Ferguson.
Effective Feedback, April 2, Mohamed Radhi, Pediatrics.

Faculty Teaching Skills Workshops. Bi-annual workshop for faculty and staff in the Carver College of Medicine, April 28 and October 24.

Clinical Teaching Topics, Marcy Rosenbaum co-presented with Jill Endres, Family Medicine (April) and with Kelly Skelly, Family Medicine (October).
Design of Visuals, Susan Lench.
Evaluating Learners, Kristi Ferguson.
Interactive Lecturing, Marcy Rosenbaum.
Small Group Teaching, Kristi Ferguson.
Teaching Philosophy, Marcy Rosenbaum.
Teaching Portfolios, Kristi Ferguson and Marcy Rosenbaum.
Test Item Writing, Rachel Miller, Internal Medicine (April) and Nancy Rosenthal, Pathology (October).
Using Technology in Teaching, Justin Stone.

Community Teaching Scholars Program Workshops. Train-the-Trainers sessions for program participants.

Teaching and Learning Psychomotor Skills, August 15, Kristi Ferguson.
Mentoring, November 7, Jeff Pettit and Kristi Ferguson.
Teaching Efficiently, November 7, Marcy Rosenbaum.

Community Teaching Scholars Regional Workshops. Workshops for community-based preceptors, co-sponsored by the Office of Statewide Clinical Education Programs.

Teaching and Learning Psychomotor Skills, Kristi Ferguson.

September 17, Des Moines.

September 25, Davenport.

October 8, Waterloo.

October 10, Sioux City.

October 13, Mason City.

October 23, Cedar Rapids.

Residents and Fellows

Future Chief Resident Leadership Symposium, April 22. Jeff Pettit, Co-Facilitator and Presenter.

Conflict Management, November 6. Presentation for the Pediatrics R2 Retreat, Galena, IL, Jeff Pettit.

Team Development, November 6. Presentation for the Pediatrics R2 Retreat, Galena, IL, Jeff Pettit.

Anesthesia Residents

Orienting New Learners, August 12, Jeff Pettit.

Motivating Learners, August 19, Jeff Pettit.

Teachable Moments, August 25, Jeff Pettit.

Feedback, August 25, Jeff Pettit.

How to Teach Psychomotor Skills, August 25, Kristi Ferguson.

Emergency Medicine Residents

Effective Teaching Skills, July 3, Jeff Pettit.

Family Medicine Residents

Leadership Styles, January 22, Jeff Pettit.

Successful Teams, March 18, Jeff Pettit.

Internal Medicine Residents

Team Development, September 19, Jeff Pettit.

Neurology Residents

Effective Teaching Skills, September 12, Jeff Pettit.

Neurosurgery Faculty and Residents

Delivering Difficult News, January 12, Marcy Rosenbaum.

Positive Thinking, February 9, Jeff Pettit.

Conflict Management, March 8, Jeff Pettit.

Meyers-Briggs Personality Inventory, April 12, Jeff Pettit, co-facilitated with Raj Karnani.

MBTI & Teams, May 10, Jeff Pettit, co-facilitated with Raj Karnani.

High ROPES Challenge Course, August 16, Jeff Pettit.

Giving Directions, October 25, Jeff Pettit.

Leadership Development Program: Resident Selection, December 6, Jeff Pettit.

Pathology Faculty and Residents

Communication Skills, November 18, Jeff Pettit.

Pediatric Fellows

Team Development, February 19, Jeff Pettit.

General Surgery Faculty and Residents

Workshops for the Leadership Development Program, Jeff Pettit.

Motivation and Delegation, January 29.

Moving from Peer to Leader, February 12.

Orienting the New Learner, February 11, Jeff Pettit.

Evaluating the Learner, March 31, Kristi Ferguson.

Other Workshops

Career Development Series, January 1. Presentation for New Faculty Orientation, Marcy Rosenbaum.

Teaching Psychomotor Skills: How Working on Your Golf Game Can Make You a Better Teacher, January 22. Presented at Surgery Grand Rounds, Kristi Ferguson.

Research and Evaluation in Medical Education, February 18. Workshop for Carver College of Medicine Faculty, Rick Axelson.

Educational Leadership Management Certificate Program Workshop, April 10. Workshop at the annual meeting of the Central Group on Educational Affairs Spring Conference, Columbus, OH, F. McCurdy and Jeff Pettit.

Nurses and Doctors: How We Talk to Each Other, April 14. Presentation at the Women in Medicine Grand Rounds, Terry Wahls, Internal Medicine, and Marcy Rosenbaum

Community Assessment, May 1. Presentation for students enrolled in the Service Distinction Track, Kristi Ferguson and Rick Axelson.

Program Evaluation Workshop Part 1: Clarifying the Evaluation Question, August 11. Workshop for Carver College of Medicine Faculty, Rick Axelson and Susan Lenoach.

Program Evaluation Workshop Part 2: Designing the Evaluation, September 8. Workshop for Carver College of Medicine Faculty, Rick Axelson.

Analytic Scoring Rubrics, September 10. Presentation at the Faculty Development Session at the Department of Family Medicine Faculty Meeting, Rick Axelson.

Learner Assessment in the Era of ACGME Competencies, September 18. Presentation for Internal Medicine Grand Rounds, Kristi Ferguson.

Learner Assessment in the Era of ACGME Competencies: Matching the Methods to the Objectives, October 17. Presentation at the Ophthalmology Retreat, Kristi Ferguson.

Models for Clinical Teaching, October 23. Presentation for the Department of Physical Therapy, Marcy Rosenbaum co-presented with Kelly Sass, Physical Therapy.

Motivating Learners, October 20. Presentation for the Pella Regional Health Center, Jeff Pettit.

Feedback & Evaluation, October 27. Presentation for the Pella Regional Health Center, Jeff Pettit.

Visiting Professor

Jonathan Silverman, M.D., Associate Clinical Dean, University of Cambridge, May 12-16. “Effective Workshops for Teaching Communication to Students, Residents and Practicing Clinicians” (for the Teaching Scholars Program); “Clinical Communication Skills: Mainstream Activity or Minority Sport?” (for Internal Medicine Grand Rounds); “Communication in General Practice: Explanation and Planning with Patients” (for Family Medicine noon conference); workshop for Foundations of Clinical Practice facilitators; workshop for simulated patients. Co-sponsored with Internal Medicine and the Office of Student Affairs and Curriculum. Several workshops were co-taught with Marcy Rosenbaum.

Elaine Dannefer, Ph.D., Director of Medical Education Research and Assessment, Case Western University Cleveland Clinic Lerner College of Medicine, October 2-3. “Learning Portfolios;” “Creating and Assessing Learning Portfolio Assignments.” Co-sponsored with the Center for Teaching and College of Medicine.

Sponsored Series:

International Association of Medical Science Educators Webcast Seminars

Medical Education and the Next Generation of Learners: 6-part seminar series, April-May 2008.

Collaborators

The following faculty members and staff assisted in our faculty development efforts by teaching all, or portions of, OCRME-sponsored workshops and seminars.

Raj Karnani
Kathryn Skhal

Teaching Scholars

Alison Abreu
Jill Endres
Rachel Miller
Mohamed Radhi
Nancy Rosenthal
Kelly Sass
Kelly Skelly
Scott Vogelgesang
Jerold Woodhead

Research, Measurement, and Evaluation

OCRME consultants work with faculty on education and health care research projects. We help faculty develop methods to measure knowledge and performance, and to analyze and interpret measurement information. We provide ongoing support for computer-based testing and performance-based assessment.

During 2008, OCRME consultants

- Participated in over 30 research and evaluation projects. The table below and on the following pages lists these projects.
- Supported test development and administration for 18 courses, clerkships, and other programs.
- Authored or co-authored 10 manuscripts on research findings. (See Publications.)
- In addition to the projects below, provided 20 consultations on research or evaluation issues such as grading, developing student evaluation instruments, survey design, research methods, study design, proposal preparation, and statistical analysis.

Research, Measurement, and Evaluation Projects

Project	Collaborators	OCRME Consultants
<i>Research on Measurement and Assessment Methods</i>		
Assessing Potential Gender Differences in Descriptors Used in the Medical Student Performance Evaluation	Michael Cohen, Pathology; Catherine Solow, Office of Student Affairs and Curriculum	Rick Axelson, Kristi Ferguson
Competencies Training and Assessment in Laboratory Medicine Using Patient Simulations ¹	Fred Dee, Pathology	Clarence Kreiter
Pediatric Simulation	Michael Tansey, Pediatrics	Rick Axelson, Clarence Kreiter
The Reliability of an Objective Structured Clinical Exam with Cases Distributed Across the Clinical Year	George Bergus, Family Medicine; Ellen Franklin, Office of Student Affairs and Curriculum	Clarence Kreiter
Structured Observed Clinical Exam ²	George Bergus, Family Medicine	Clarence Kreiter, Roger Steffen
A Study of Two Performance Scores: A Combined Score Derived from Clinical Evaluation Forms and Objective Structured Clinical Exams	George Bergus, Family Medicine	Clarence Kreiter
Case Specificity		Clarence Kreiter

¹Funded by external grants

²Funded by Educational Development Fund

Project	Collaborators	OCRME Consultants
<i>Research and Evaluation of Program Effectiveness and Outcomes</i>		
Analysis of Graduation Questionnaire	Christopher Cooper, Office of Student Affairs and Curriculum	Kristi Ferguson
Carver College of Medicine Admissions Process Evaluation	Kathlene Huebner, Catherine Solow, Office of Student Affairs and Curriculum	Rick Axelson, Kristi Ferguson, Clare Kreiter
Case-Based Learning Issues		Kristi Ferguson
Case-Based Learning Groups for Carver College of Medicine Applicants	Barry DeYoung, Radiology; Kathlene Huebner, Catherine Solow, Office of Student Affairs and Curriculum	Kristi Ferguson
Education in Ethics and Professionalism ²	Lauris Kaldjian, Internal Medicine	Marcy Rosenbaum
Pre-Intervention Assessment for Standardizing Communication Curriculum ²	George Bergus, Family Medicine; Ellen Franklin, Office of Student Affairs and Curriculum; Paetra Ruddy, Medicine Administration	Marcy Rosenbaum, Rick Axelson
Anesthesia Teacher Evaluation	Brad Hindman, Anesthesia	Clarence Kreiter
Evaluation of Academic Detailing	Community Teaching Scholars	Rick Axelson, Marcy Rosenbaum
Lecture Capture Pilot Project	Larry Hook, Eric Kaiser, Student Note Service; Jo Benda, Pathology	Susan Lench, Rick Axelson, Roger Steffen
Training Grant-Developmental Disabilities (ILEND) ¹	Program Staff; Dennis Harper, Developmental Disabilities	Marcy Rosenbaum, Clarence Kreiter
Neonatal-Perinatal Medicine Fellowship Program	Pediatrics	Rick Axelson, Clarence Kreiter
Needlestick Project		Kristi Ferguson
Youth Suicide Prevention Program Evaluation	Iowa Department of Public Health	Rick Axelson, Kristi Ferguson
Vaccination Education	Ellen Link, Pediatrics	Clarence Kreiter
Summer Research Fellowship Participant Survey	Kathlene Huebner, Office of Student Affairs and Curriculum; Christie Thomas, Internal Medicine	Kristi Ferguson
Residents' Attitudes about the Use of a Skills Lab in their Training	John Sharp, Susan Hagen, Laura Adams, Surgery	Kristi Ferguson

¹Funded by external grants

²Funded by Educational Development Fund

Other Research

Clinical and Professional Reflection Program Research	Kimberly Ephgrave, Surgery	Marcy Rosenbaum
Interprofessional Communications Research	Terry Wahls, Internal Medicine; Erica Prussing, Laura Graham, Anthropology	Marcy Rosenbaum
Learning Communities Project	Donald Yarbrough, College of Education; Ellen Wolter, University of Minnesota; Jan Carline, University of Washington; Ed Krupat, Harvard	Kristi Ferguson
Neurosurgery Leadership Research		Jeff Pettit, Rick Axelson
Physical Therapy Goals Focus Group Research	Kelly Sass, Physical Therapy	Marcy Rosenbaum
Professionalism	Kimberly Ephgrave, Surgery	Kristi Ferguson
Teaching in the Presence of the Patient in Psychiatry	Alison Abreu, Psychiatry; Geordie Lawry, Internal Medicine	Marcy Rosenbaum, Clarence Kreiter
Alliance for Clinical Educators' Study of Clerkship Directors	Kimberly Ephgrave, Surgery	Kristi Ferguson, Stephanie Burnett
Injury Prevention Research Center ¹		Kristi Ferguson
Education of Patients Related to Spinal Anesthesia	Lee Bennett, Anesthesia; Chiraag Dharia, M1	Kristi Ferguson
Trauma/EGS/Burn Team Development	Gerald Kealey, Surgery	Jeff Pettit

¹Funded by external grants

Computer-Based Testing

OCRME staff support courses and clerkships to administer computer-based tests and provide products for test administration, item-banking, and reporting. Originally developed by Scott Elliott and Martin Sanchez, the products have been further refined by Justin Stone and Jason McGovern. Robyn Miessler-Kubanek provides logistical support and Clare Kreiter provides measurement expertise.

OCRME Supported Examinations in 2008

Anesthesia Modules; Paul Leonard, Ann Willemsen-Dunlap, Anesthesia

Dermatology Clerkship Exam; Vincent Liu, Dermatology

Dermatology Education Optimization Project (DPEP); Vincent Liu, Dermatology

Family Medicine Preceptorship; Jill Endres, Family Medicine
FCP III Lecture Exam; Hans House, Internal Medicine
FCP IV Lecture Exam; DeeDee Stafford, Internal Medicine
Healthcare Ethics, Law & Policy (HELP) Exam; Lauris Kaldjian, Internal Medicine
Human Organ Systems (HOS) Lecture and Histology Exam; Thomas Schmidt, Physiology,
Greg Schmidt, Pulmonary, and Paul Heidger, Anatomy & Cell Biology
Human Physiology Lecture Exam for Dental Students; Erwin Shibata, Physiology
Human Physiology Lecture Exam for Physician Assistant Students; Erwin Shibata,
Physiology
Internal Medicine Inpatient Clerkship Exam; Lisa Antes, Internal Medicine
Internal Medicine Outpatient Clerkship Exam; John Fieselmann, Internal Medicine
Internal Medicine Resident Exam; Rachel Miller, Internal Medicine
Medical Cell Biology Exam; Andy Russo, Physiology
Ophthalmology Clerkship Exam; Hilary Beaver, Ophthalmology
Pediatrics Clerkship Exam; Jerold Woodhead, Pediatrics
Physician Assistant Exam; Theresa Hegmann, Physician Assistant Program
Radiology Lecture Exam; Stephanie Setter, Radiology
Surgery Clerkship Exam; Kimberly Ephgrave, Surgery

Virtual Patient Simulator (VPS) Examinations in 2008

Internal Medicine Inpatient Virtual Patient Simulator Exam; Lisa Antes, Internal
Medicine
Internal Medicine Outpatient Virtual Patient Simulator Exam; John Fieselmann, Internal
Medicine

OCRME Test Development and Administration Products

ItemBanker allows developers to create a secure database of exam questions that they can easily edit and select in order to prepare paper or computer-based exams. The program performs item analysis in order to improve exam performance and reliability. The historical performance of the items is then available for future use in exam construction.

Module Viewer is an on-line test delivery system designed for administering on-line exams.

Module Maker is an on-line tool used to administer tests created in Itembanker for Module Viewer. Module Maker is also used to create learning tutorials/modules to be viewed with Module Viewer.

Virtual Patient Simulator (VPS) software system is used to collect data on student clinical performance in patient simulation programs.

Presentations

University Presentations

The Development of Interactive Training with the Aim of Improving Physician-Nurse Communicative Behaviors, January 31. Poster presented at the annual University of Iowa Internal Medicine Research Day, T. Wahls, S. McConkey, M. Rosenbaum.

Women Physicians Perceive a Gender Based Differential in Expectations and Responsiveness of Women Nurses to Women Physicians, January 31. Poster presented at the annual University of Iowa Department of Internal Medicine Research Day, T.L. Wahls, E. Prussing, L.R. Graham, S. Jewell, M. Rosenbaum.

Grand Rounds: Experiencing Cancer, April 25-26. Public performances, M. Rosenbaum, L. Herwaldt, A. Bunn.

Case-Based Learning Demonstration, June 7. Presentation for University of Iowa Carver College of Medicine Alumni, K. Ferguson.

Case-Based Learning Demonstration, June 10. Presentation for a group of visiting high school students, K. Ferguson.

Case-Based Learning Demonstration, August 22. Presentation for the University of Iowa Carver College of Medicine Orientation for Parents and Spouses, K. Ferguson.

Exploring Teaching Techniques that Influence Student Learning, September 5. Poster presented at the Carver College of Medicine Medical Student Research Day, M. Shaikh, S. Hagen, M. Rosenbaum, K. Ephgrave.

Perceptions of the Impact of Gender on Communication between Doctors and Nurses within the Healthcare Team, September 5. Poster presented at the Carver College of Medicine Medical Student Research Day, R. Terlow, L. Graham, E. Prussing, M. Rosenbaum, T. Wahls.

See One, Do One: What Senior Medical Students Observe on the Medical Interview, September 5. Poster presented at the Carver College of Medicine Medical Student Research Day, P. Ruddy, M. Rosenbaum, R. Axelson.

Certificate in Medical Education, November 6. Poster presented at Changes on the Horizon in Medical Education: Medical Education at Iowa conference, K. Ferguson, M. Rosenbaum, C. Kreiter, J. Pettit.

Education in Ethics and Professionalism: From Lecture Hall to Clinical Experience, November 6. Poster presented at Changes on the Horizon in Medical Education: Medical Education at Iowa conference, L.C. Kaldjian, J.C. Woodhead, L.M. Antes, J.A. Rowat, L.A. Shinkunas, M.E. Rosenbaum, V.L. Forman-Hoffman.

Educational Development Fund, November 6. Poster presented at Changes on the Horizon in Medical Education: Medical Education at Iowa conference, S. Lench.

Evaluation of a Fellows as Clinician Educators (FACE) Program, November 6. Poster presented at Changes on the Horizon in Medical Education: Medical Education at Iowa conference, M. Rosenbaum, S. Vogelgesang, J. Rowat, K. Ferguson.

Gender Bias in the Medical Student Performance Evaluation, November 6. Poster presented at Changes on the Horizon in Medical Education: Medical Education at Iowa conference, R.D. Axelson, K.J. Ferguson, C.M. Solow, M.B. Cohen.

The Generalizability of the Structured and Unstructured Components of the Preadmission Interview, November 6. Poster presented at Changes on the Horizon in Medical Education: Medical Education at Iowa conference, R. Axelson, J. McGovern, C. Solow, K. Huebner, K. Ferguson, C. Kreiter.

Increasing Accountability and Face Validity of Standardized Patient Programs: A Question of SP Accuracy, November 6. Poster presented at Changes on the Horizon in Medical Education: Medical Education at Iowa conference, E.M. Franklin, M. Rosenbaum, R. Axelson.

Iowa Teaching Scholars Program, November 6. Poster presented at Changes on the Horizon in Medical Education: Medical Education at Iowa conference, M. Rosenbaum, K. Ferguson, S. Lench.

Masters in Medical Education, November 6. Poster presented at Changes on the Horizon in Medical Education: Medical Education at Iowa conference, K. Ferguson, M. Rosenbaum, C. Kreiter, J. Pettit.

A Multi-Method Study Evaluating Faculty Characteristics and Techniques that Influence Student Retention of Lecture Material, November 6. Poster presented at Changes on the Horizon in Medical Education: Medical Education at Iowa conference, S. Hagen, M. Shaikh, M. Rosenbaum, K. Ephgrave.

Teaching Skills for Medical Students, November 6. Poster presented at Changes on the Horizon in Medical Education: Medical Education at Iowa conference, J. Pettit, K. Ferguson.

Case-Based Learning Demonstration, November 7. Presentation at Inside Iowa Day, K. Ferguson.

Case-Based Learning Demonstration, November 14. Presentation at Scholarship Day, K. Ferguson.

Regional, National and International Presentations

Are Students Learning What We are Trying to Teach?, February 13. Presentation at the Third Annual Academic Surgical Congress, Huntington Beach, CA, S. Hagen, M. Shaikh, M. Rosenbaum, K. Ephgrave.

What Surgery Students Remember: The Relationship Between Faculty Goals, Lecture Characteristics and Student Learning, February 13. Presentation at the Third Annual Academic Surgical Congress, Huntington Beach, CA, S. Hagen, M. Shaikh, M. Rosenbaum, K. Ephgrave.

Visioning the Future: Leadership Development for Future Chief Residents, February 28. Poster presented at ACGME Education Conference, Grapevine, TX, J.E. Pettit, M.C., Wilson.

Trained Lay Observers can Reliably Assess Medical Students' Communication Skills During Clinical Encounters with Patients, March 5-8. Paper presented at the 13th Ottawa International Conference on Clinical Competence, Melbourne, Australia, G. Bergus, J. Woodhead, C. Kreiter.

Using Trained Lay Observers and Faculty Physicians to Assess the Clinical Skills of Medical Students Working with Real Patients in an Out-Patient Clinic, March 5-8. Paper presented at the 13th Ottawa International Conference on Clinical Competence, Melbourne, Australia, G. Bergus, J. Woodhead, C. Kreiter.

Teaching Elective for Medical Students, April 10. Poster presented at the Central Group on Educational Affairs Spring Conference, Columbus, OH, J. Pettit, K. Ferguson.

Grand Rounds: Experiencing Cancer, April 24. Presentation at the Examined Life Conference, Iowa City, IA, M. Rosenbaum, L. Herwaldt, A. Bunn.

Assessment and the Program Evaluation Standards, November 7. Presented at the American Evaluation Association Annual Conference, Denver, CO, R.D. Axelson, A. Flick.

Course-Evaluation Design II: Faculty Perspectives on Practices and Continuing Development (Multi-Paper Session), November 8. Presented at the American Evaluation Association Annual Conference, Denver, CO, J. Trudel, S. Francis, M. Kennedy, R. Axelson (Chair), J. Reeves (Discussant).

Teaching Evaluation to Working Professionals: A Hybrid Approach, November 8. Presented at the American Evaluation Association Annual Conference, Denver, CO, R.D. Axelson.

Publications

- Anderson, M., Hartz, A., Nordin, T., **Rosenbaum, M.**, Noyes, R., James, P., Ely, J., Agarwal, N., Anderson, S. Community Physicians' Strategies for Patients with Medically Unexplained Symptoms. *Family Medicine*, 40(2):111-8, February 2008.
- Axelson, R.**, Flick, A. Sustaining Assessment: A Post-Epidemiological Approach Using the Program Evaluation Standards. *Assessment Update*, in press, 2008.
- Axelson, R.D., Kreiter, C.D.** Chapter 3 Reliability in: *Assessment in Health Professions Education*. Edited by S. Downing and R. Youdkowsky, Lawrence Erlbaum/Taylor & Francis Group, in press, 2008.
- Bennett, D.L., Dharia, C.V., **Ferguson, K.J.**, Okon A.E. Patient-Physician Communication: Informed Consent for Imaging Guided Spine Injections. *Journal of the American College of Radiology*, in press, 2008.
- Ferguson, K.J.**, Pizzimenti, M., Iverson, W. Constructing Stories of Past Lives: Cadaver as First Patient: Clinical Summary of Dissection Writing Assignment. *The Permanente Journal*, 12(2):89-92, 2008.
- Hagen, S.S., Shaikh, M., **Rosenbaum, M.**, Ephgrave, K. Are Students Learning What We Are Trying to Teach? *Journal of Surgical Research*, 147(2):225-8, epub April 8, 2008.
- Ho, E.Y., Bylund, C.L., **Rosenbaum, M.**, Herwaldt, L.A. Teaching Health Communication Through Found Poems Created from Patient Stories. *Communication Teacher*, in press, 2008.
- Konapaske, L., **Rosenbaum, M.E.**, Kelly-Cole, K. Evaluating Communication Skills Training Courses in: *Handbook of Communication in Cancer and Palliative Care*. Edited by Kissane, et al, Oxford University Press, in press, 2008.
- Kreiter, C.D.** Chapter 4 Generalizability Theory in: *Assessment in Health Professions Education*. Edited by S. Downing, Lawrence Erlbaum/Taylor & Francis Group, in press, 2008.
- Kreiter, C.** A Comment on the Continuing Impact of Case Specificity. *Medical Education*, 42:548-549, 2008.
- Kreiter, C.D.**, Bergus, G.R. A Commentary on the Validity of Performance-Based Clinical Reasoning Measures and Suggestions for Improving Assessment Methods. *Medical Education*, in press, 2008.
- Petersen, K., **Rosenbaum, M.E., Kreiter, C.D.**, Thomas, A., Vogelgesang, S.A., Lawry, G.V. A Randomized Controlled Study Comparing Educational Outcomes of Examination Room versus Conference Room Staffing. *Teaching and Learning in Medicine*, 20(3):218-224, Jul-Sep 2008.

Rosenbaum, M.E., Ferguson, K.F., Broderick, A., Lobas, J. Five Year Experience: Reflective Writing in a Pre-Clinical End of Life Care Curriculum. *Kaiser-Permanente Journal*, 12(2):36-41, 2008.

Service to the College, University, and Academia

Committee Membership

Admissions Committee, Interview Subcommittee: Kristi Ferguson, Jeff Pettit, Marcy Rosenbaum

Advisory Committee, Clinical Professional Reflection Project: Marcy Rosenbaum

Clerkship Experiences Committee: Kristi Ferguson (ex-officio), Jeff Pettit

Continuing Medical Education Committee: Marcy Rosenbaum

Department of Neurosurgery, Resident Interviewing Committee: Jeff Pettit

Development of a Teaching Distinction Track Committee: Jeff Pettit

End of Life Education Committee: Marcy Rosenbaum

ICON Collegiate Administrators Group: Roger Steffen

Medical Council: Kristi Ferguson

Medical Arts & Sciences Committee: Kristi Ferguson, Susan Lench

Medical Education Committee : Kristi Ferguson, Susan Lench (ex-officio)

OCRME Advisory Committee: Susan Lench (ex-officio)

OCRME Masters in Medical Education

Admissions Committee: Rick Axelson, Kristi Ferguson, Clare Kreiter, Jeff Pettit, Marcy Rosenbaum

Portfolio Defense Committee: Jeff Pettit

Program in Biomedical Ethics Review Committee: Kristi Ferguson (chair)

Task Force on Interdisciplinary Education, Ad hoc Committee: Jeff Pettit

Technology Planning Committee, Oversight Committee: Justin Stone

College of Public Health

Injury Prevention Center Executive Committee: Kristi Ferguson

Department of Anthropology, Affiliated Faculty Member: Marcy Rosenbaum

Teaching in College of Medicine and Other Courses

050:162 Foundations of Clinical Practice I

Introduction to Communication Skills I (lecture), Marcy Rosenbaum

Introduction to Communication Skills II (lecture), Marcy Rosenbaum

Responding to Patient's Emotions (lecture), Marcy Rosenbaum

In Their Own Words: Patient Narratives, Marcy Rosenbaum with Loreen Herwaldt

Small Group Facilitator, Kristi Ferguson

- 050:163 Foundations of Clinical Practice II
Case-Based Learning (facilitator), Kristi Ferguson
- 050:164 Foundations of Clinical Practice III
Human Sexuality (small-group facilitator), Marcy Rosenbaum
- 050:165 Foundations of Clinical Practice IV
End of Life Care (lecture series co-coordinator), Marcy Rosenbaum
- 050:170 Clinical Beginnings Week (M3)
Breaking Bad News, Marcy Rosenbaum (Small Group Facilitator)
- 050:190 Introduction to Medical Education at Iowa
Case-Based Learning Demonstration (lecture), Kristi Ferguson
- 050:300 Teaching Skills for Medical Students, Jeff Pettit and Kristi Ferguson (Co-Course Directors)
- 050:666 Ambulatory Practice Module
Breaking Bad News Session, Marcy Rosenbaum (Coordinator, Small Group Facilitator)
- 050:701 Instructional Design and Technology, Jeff Pettit (Course Director)
- 050:702 Clinical Teaching in Medical Education, Marcy Rosenbaum (Course Director)
- 050:703 Educational Research and Evaluation, Rick Axelson (Course Director)
- 050:711 Teaching Methods in Medical Education, Kristi Ferguson and Marcy Rosenbaum (Co-Course Directors)
Susan Lenoach, Guest Instructor
- 050:712 Introduction to Educational Measurement, Clare Kreiter (Course Director)
- 050:713 Assessment in Medical Education, Clare Kreiter (Course Director)
- 050:714 Current Issues in Medical Education, Kristi Ferguson (Course Director)
- 050:720 Portfolio, Kristi Ferguson (Course Director)
- 050:721 Study in Faculty Development, Marcy Rosenbaum (Course Director)
- 050:722 Independent Study, Marcy Rosenbaum (Co-Course Director)
- 117:101 Introduction to Medical History and Physical Exam (Physician Assistant Program)
Health Disparities (lecture), Kristi Ferguson
- Medical Interviewing Curriculum Reform Project, FCP I-IV, Marcy Rosenbaum (Coordinator)

Professional Organizations

Membership and Leadership

American Academy for Communication and Healthcare: Marcy Rosenbaum

American Educational Research Association (AERA): Kristi Ferguson, Susan Lenocho
AERA Division I Affirmative Action Committee: Clare Kreiter

American Evaluation Association (AEA): Rick Axelson

American Public Health Association: Kristi Ferguson

Association of American Medical Colleges (AAMC): Kristi Ferguson, Clare Kreiter, Susan Lenocho, Marcy Rosenbaum

AAMC Group on Educational Affairs: Steering Committee, Kristi Ferguson

AAMC Central Group on Educational Affairs

Annual Meeting Proposals Web Site: Kristi Ferguson, Justin Stone
Chair: Kristi Ferguson

Education Leadership Management Certificate Program, Jeff Pettit
Leadership Development Special Interest Group, Jeff Pettit (Convener)

European Association for Communication in Healthcare

Teaching Committee: Marcy Rosenbaum (Co-Chair)

Meet the Professors Program: Marcy Rosenbaum (Chair)

Pairing with the Colleagues Program, Marcy Rosenbaum (Chair)

Generalists in Medical Education: Marcy Rosenbaum

International Conference on Communication in Healthcare

Scientific Committee: Marcy Rosenbaum

National Council on Measurement in Education: Clare Kreiter

Society of Directors of Research in Medical Education: Kristi Ferguson, Past President

Society of Teachers of Family Medicine: Marcy Rosenbaum

Reviewer Activities

Academic Medicine: Clare Kreiter, Marcy Rosenbaum

Advances in Health Sciences Education: Rick Axelson, Clare Kreiter (Associate Editor),
Kristi Ferguson

Ambulatory Pediatrics: Clare Kreiter

BMC Medical Education: Kristi Ferguson (editorial board)

BMC Medical Informatics and Decision Making: Kristi Ferguson

BMC Public Health: Kristi Ferguson

Education for Health: Marcy Rosenbaum

Family Medicine: Marcy Rosenbaum

Health Education and Behavior Quarterly: Kristi Ferguson
Journal of Postgraduate Medicine: Marcy Rosenbaum
Medical Education: Kristi Ferguson
Medical Education Online: Marcy Rosenbaum, Clare Kreiter
MedEdPortal: Marcy Rosenbaum
Patient Education Counseling: Marcy Rosenbaum
Pediatrics: Marcy Rosenbaum
Psychosocial Oncology: Marcy Rosenbaum
Teaching and Learning in Medicine: Clare Kreiter (editorial board), Marcy Rosenbaum
The Journal of the American Academy of Physician Assistants: Clare Kreiter

AEA Conference Proposals: Rick Axelson

AERA Conference Annual Meeting Proposals: Clare Kreiter, Susan Lench

American Academy for Communication in Healthcare: Marcy Rosenbaum

AAMC Annual Meeting

Conference Proposals: Marcy Rosenbaum

Small Group Discussion Proposals: Kristi Ferguson, Susan Lench, Marcy Rosenbaum

Mini-workshops: Kristi Ferguson, Susan Lench

Research in Medical Education papers: Clare Kreiter

AAMC Central Group on Education Affairs Annual Meeting Proposals: Kristi Ferguson, Jeff Pettit

AAMC Southern Group on Education Affairs Annual Meeting Proposals: Jeff Pettit

European Association for Communication in Healthcare: Marcy Rosenbaum

International Conference on Communication in Healthcare: Marcy Rosenbaum

National Council on Medical Education: Clare Kreiter

Addendum: Report of the Advisory Committee to the Office of Consultation and Research in Medical Education

The OCRME Advisory Committee performs several important functions. It reviews applications to the College's Educational Development Fund (EDF) and determines the recipient of the Lewis D. Holloway Award for Research in Health Sciences Education. The Committee is also charged with recommending to the Dean, nominees for the Collegiate Teaching Awards, the Regents Award for Faculty Excellence, and the President and Provost Award for Teaching Excellence. For additional information about these awards, please visit the OCRME web site at www.healthcare.uiowa.edu/ocrme.

Committee Members

July 2008 - June 2009

D. Lee Bennett, M.D., Radiology
Robert Fellows, Ph.D., Physiology
Jess Fiedorowicz, Psychiatry
Anthony Han, Anesthesia
Theresa Hegmann, M.P.A.S., (Chair)
Physician Assistant Program
Yasser Karim, Anesthesia
Sergio Mendoza, Orthopaedic Surgery and
Rehabilitation

Marc Pizzimenti, Ph.D., Anatomy and Cell
Biology
Nancy Rosenthal, M.D., Pathology
Kelly Skelly, M.D., Family Medicine
Sonya Kirmani, M3 Student
Audrey Ko, M2 Student
Anna Marcinow, M4 Student

July 2007 - June 2008

D. Lee Bennett, M.D., Radiology
Richard Dehn, M.P.A., PA-C, Physician
Assistant Program
Robert Fellows, Ph.D., (Chair) Physiology
Theresa Hegmann, M.P.A.S., Physician
Assistant Program
Brian Mullan, M.D., Radiology
Marc Pizzimenti, Ph.D., Anatomy and
Cell Biology

Christina Reimer, M.D., Internal Medicine
Nancy Rosenthal, M.D., Pathology
Kelly Skelly, M.D., Family Medicine
Jerold Woodhead, M.D., Pediatrics
Dominic Cirillo, M4 Student
Sonya Kirmani, M2 Student
Anna Marcinow, M3 Student

Ex-Officio Members

Thomas Schmidt, Ph.D., Physiology & Biophysics
Lois Geist, M.D., Associate Dean for Faculty Affairs
Kristi Ferguson, Ph.D., Director, OCRME

Educational Development Fund Proposals

The Carver College of Medicine Educational Development Fund program encourages innovation and experimentation in teaching. The OCRME Advisory Committee reviews the proposals and makes recommendations for funding. OCRME consultants coordinate the application and review process. They often help faculty to prepare proposals and to conduct the projects. Guidelines for proposal submission and abstracts from proposals funded in the past several years appear on the OCRME web site: www.healthcare.uiowa.edu/ocrme in the section on Funding. The following are abstracts from proposals funded in 2008.

Staffing Psychiatric Care in the Patient's Presence

Alison Abreu, M.D., Psychiatry

As the focus of medicine has shifted from inpatient to primarily outpatient care, teaching has shifted from patient-centered "bedside" teaching to conference room discussions. Medical educators have explored adapting bedside teaching methods to the outpatient setting. While teaching in the patient's presence in the outpatient medical setting has been well-received, skepticism has been expressed as to whether this method can be used when the patient has a mental health concern or condition. This pilot study aims to compare the use of teaching in the presence of the patient with conference room staffing with patients who are being seen for a mental health concern. Learners in the adult psychiatry outpatient continuity clinic will be randomized to either exam room or conference room staffing. Outcomes of these encounters will be compared using post-encounter and post-rotation surveys to determine differences in patient, learner, and teacher comfort and satisfaction and amount of time spent.

Clinical Outcomes of an Applied Evidence-Based Medicine Research Curriculum

Theresa Hegmann, M.P.A.S., P.A.-C., Physician Assistant Program

The University of Iowa Physician Assistant Program changed its Master's level research curriculum substantially in 2000-2001, going from a passive survey of research methods, to an applied evidence-based medicine (EBM) curriculum that emphasizes asking focused clinical questions, searching MEDLINE efficiently, and critically analyzing the validity of medical research studies. The goal of the curriculum change was to provide students with practical skills to apply EBM principles, both to benefit patient care, and as a tool for life-long learning. The purpose of this project proposal is to evaluate whether we have met these goals. Do graduates exposed to the new research curriculum actively apply EBM skills in their clinical practice? This will be accomplished by administering a survey to five years of students graduating after the curriculum change, compared to a similar-sized group who graduated before the change. Results of the study will help guide future decisions regarding EBM curriculum.

Project Surgical Residents-As-Educators (PSRE)

Hisakazu Hoshi, M.D., Surgery

Most medical school graduates entering surgical training programs are hard-working and motivated to learn surgical skills, but few are prepared for their roles as teachers, supervisors, and evaluators of other learners. Residents-as-teachers programs have had limited success in improving performance on Objective Structured Teaching Exams (OSTE), but consistent positive impact on attitudes toward students and the teaching role. We propose to measure the residents' teaching skills with OSTE prior to and following a program of workshops designed around our prior needs assessment quantifying the priorities of students, residents, and faculty regarding surgery resident teaching. Residents will receive written feedback on videotaped OSTE sessions and opportunities to review their tapes with an educator or peer, in addition to focused workshops and readings spread over six months. We will lay the groundwork for an ongoing, continuously revised program to support surgical residents' development as educators of their students, patients, peers, and faculty.

Pre-Intervention Assessment for Standardizing Communication Curriculum

Marcy Rosenbaum, Ph.D., OCRME and Family Medicine

Current training in medical interviewing at UICCOM varies in its content depending on choices made by individual lecturing faculty, as well as styles and preferences of individual small group facilitators. Beginning in the Fall of 2008, a comprehensive framework for teaching and assessing medical interviewing and communication skills will be implemented in the Foundations of Clinical Practice courses. Prior to this curriculum revision, we plan to gather data identifying students' cognitive models of medical interviewing, and their perceptions of effective and ineffective aspects of their training in medical interviewing in both preclinical courses and during clinical rotations. These data will be compared with student PBA performance to determine if any relationship exists between students' cognitive models and their medical interviewing behavior. Data from this study will be used to guide curricular revisions and provide baseline data for longitudinal comparison of students' knowledge and perspectives following curriculum change.

Faculty Awards

The following are the recipients of awards the Committee reviewed in 2008.

Collegiate Teaching Award 2007-2008

George Bergus, Family Medicine

John Fieselmann, Internal Medicine

Peg Nopoulos, Psychiatry

Janeta Tansey, Psychiatry

Lewis D. Holloway Award for Research in Health Sciences Education

George Bergus, Family Medicine

President and Provost Award for Teaching Excellence

Joel Gordon, Internal Medicine

Regents Award for Faculty Excellence

Pamela Geyer, Biochemistry

Jane Paulsen, Psychiatry

OCRME staff members also assist in administering the John P. Long Teaching Award in the Basic Sciences. The 2007-2008 recipient was Martin Cassell, Anatomy and Cell Biology.